

VORTAC FBC 108.2 Chan 19	APP CRS 051°	Rwy Ldg TDZE Apt Elev 752	N/A N/A 752
--	------------------------	---	--------------------------

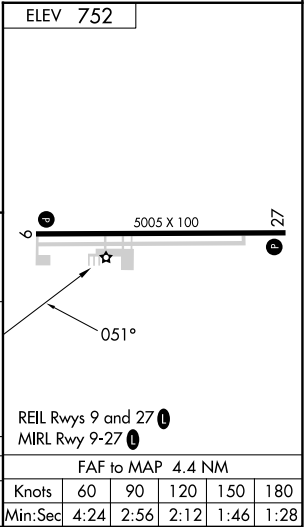
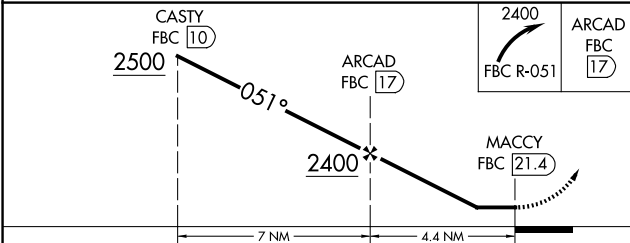
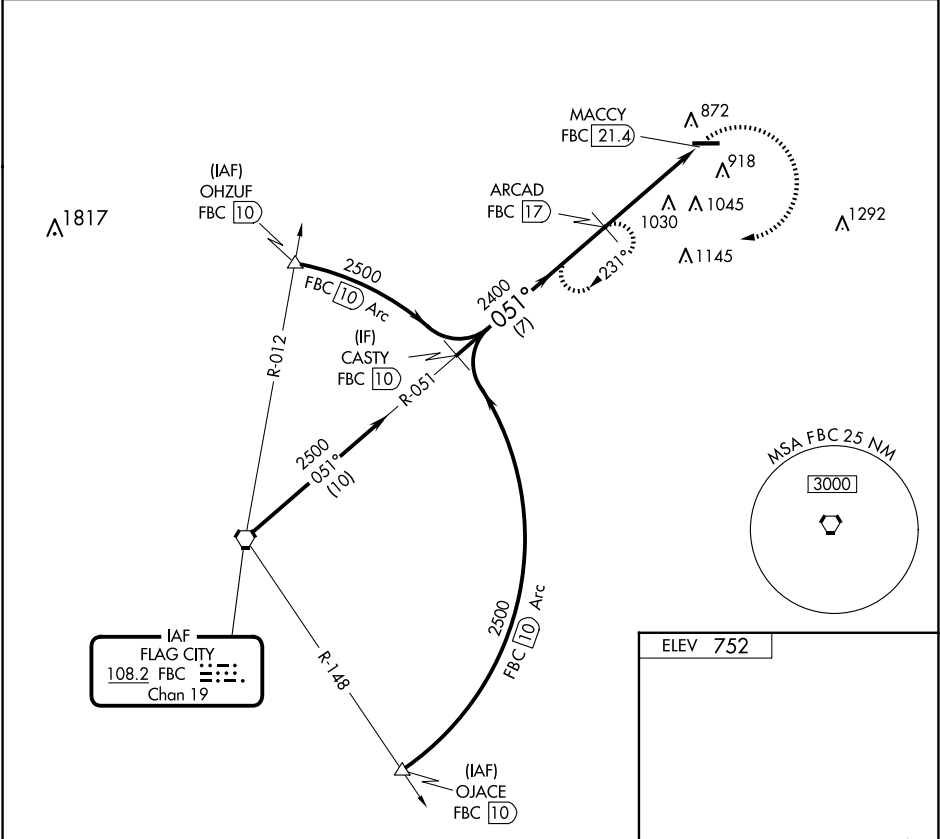
VOR-A
DONALD P MILLER (FZI)


DME required.

When local altimeter setting not received, use Findlay
altimeter setting and increase all MDA 60 feet, and
increase Cat C visibility ¼ mile.

MISSED APPROACH: Climbing right turn to 2400 on
FBC VORTAC R-051 to ARCAD/FBC 17 DME and hold.

AWOS-3 124.625	TOLEDO APP CON 126.1 307.0	UNICOM 122.7 (CTAF) 0
--------------------------	--------------------------------------	--



CATEGORY	A	B	C	D	FAF to MAP 4.4 NM					
 CIRCLING	1400-1	1400-1¼	1400-1¾	NA	Knots	60	90	120	150	180
	648 (700-1)	648 (700-1¼)	648 (700-1¾)		Min:Sec	4:24	2:56	2:12	1:46	1:28

EC-2, 10 JUL 2025 to 07 AUG 2025

EC-2, 10 JUL 2025 to 07 AUG 2025