

WAAS CH 53529 W09A	APP CRS 095°	Rwy Ldg TDZE 752 Apt Elev 752
--	------------------------	---

RNAV (GPS) RWY 9

DONALD P MILLER (FZI)

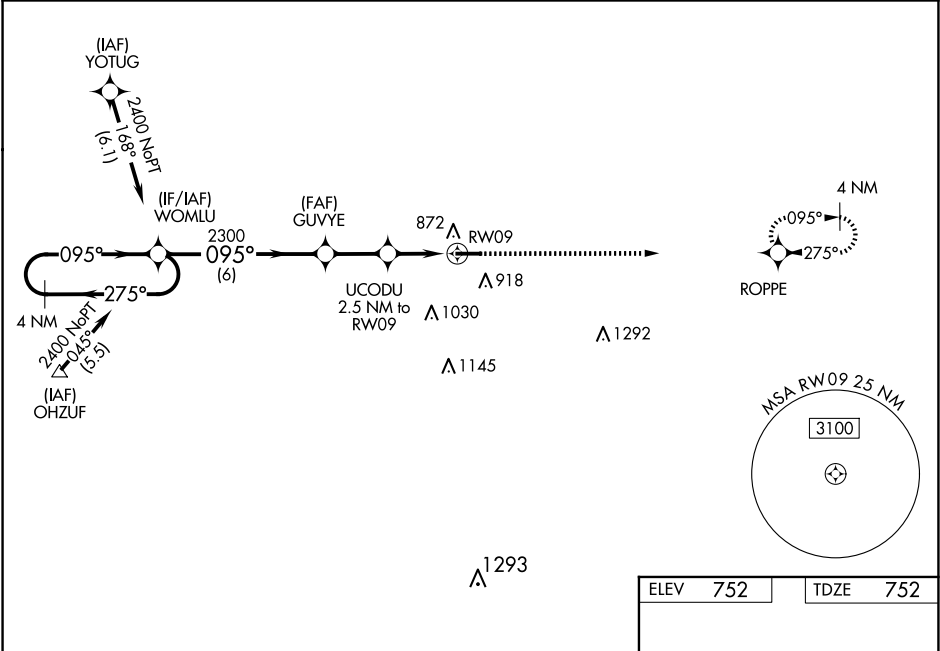
▼

▲

DME/DME RNP-0.3 NA. Visibility reduction by helicopters NA. Baro-VNAV NA when using Findlay altimeter setting. For uncompensated Baro-VNAV systems, LNAV/VNAV NA below -16°C (4°F) or above 54°C (130°F). When local altimeter setting not received, use Findlay altimeter setting and increase LPV DA to 1122 feet and all visibilities ¼ SM; increase LNAV/VNAV DA to 1121 feet and all visibilities ⅓ SM; increase all MDAs 60 feet and LNAV Cat C visibility ⅓ SM, increase Circling Cat C visibility ¼ SM. When VGSI inop, Straight-in/Circling Rwy 9 procedure NA at night.

MISSED APPROACH:
Climb to 2400 direct ROPPE and hold.

AWOS-3 124.625	TOLEDO APP CON 126.1 307.0	UNICOM 122.7 (CTAF) 0
--------------------------	--------------------------------------	---------------------------------



4 NM Holding Pattern

WOMLU

VGSI and RNAV glidepath not coincident (VGSI Angle 3.00/TCH 25).

2400 ROPPE

GP 3.00° TCH 40

2300

2300

2300

2.2 NM

2.5 NM

RWY 09

*LNAV only.

5005 X 100

27

095°

CATEGORY	A	B	C	D
LPV DA	1075-1⅓	323 (400-1⅓)		NA
LNAV/VNAV DA	1074-1⅓	322 (400-1⅓)		NA
LNAV MDA	1180-1	428 (500-1)	1180-1¼ 428 (500-1¼)	NA
CIRCLING	1280-1 528 (600-1)	1320-1 568 (600-1)	1400-1¾ 648 (700-1¾)	NA

REIL Rwy 9 and 27 0
MIRL Rwy 9-27 0