

APP CRS	Rwy Idg	4400
009°	TDZE	777
	Apt Elev	779

RNAV (GPS) RWY 1

PERU MUNI (I76)

RNP APCH - GPS.

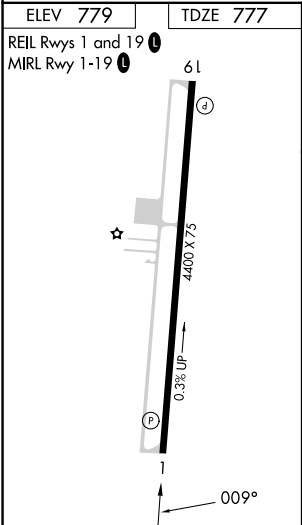
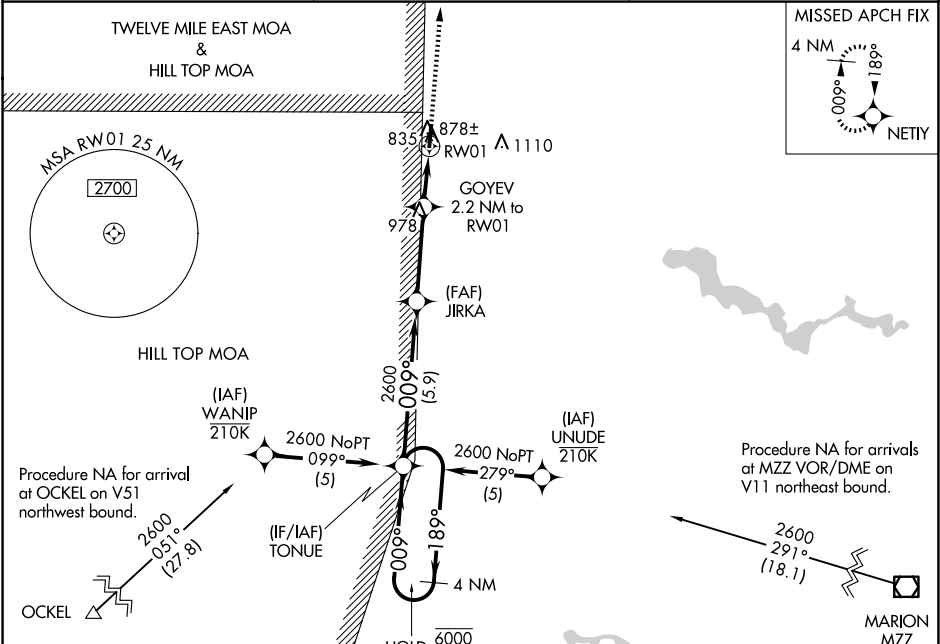
▼

▲ NA

Rwy 1 helicopter visibility reduction below 1 SM NA. Use Grissom ARB altimeter setting, when not received, use Logansport/Cass County altimeter setting: increase all MDAs 20 feet and Circling visibility Cat C and D ¼ SM.

MISSED APPROACH:  
Climb to 2600 direct  
NETIY and hold.

KGUS ATIS 132.55 270.8	GRISSOM APP CON ★ 121.05 338.275	UNICOM 122.8 (CTAF) 0
---------------------------	-------------------------------------	--------------------------



Δ 1365			
4 NM Holding Pattern			
TONUE JIRKA			
6000 2600 189° 009° 009° 2600			
3.00° TCH 47 1520			
5.9 NM 3.4 NM 2.2			
CATEGORY	A	B	C D
LNAV MDA	1160-1 383 (400-1)	1160-1 383 (400-1 1/8)	
CIRCLING	1280-1 501 (600-1)	1500-2 721 (800-2)	1500-2 1/4 721 (800-2 1/4)

EC-2, 10 JUL 2025 to 07 AUG 2025

EC-2, 10 JUL 2025 to 07 AUG 2025