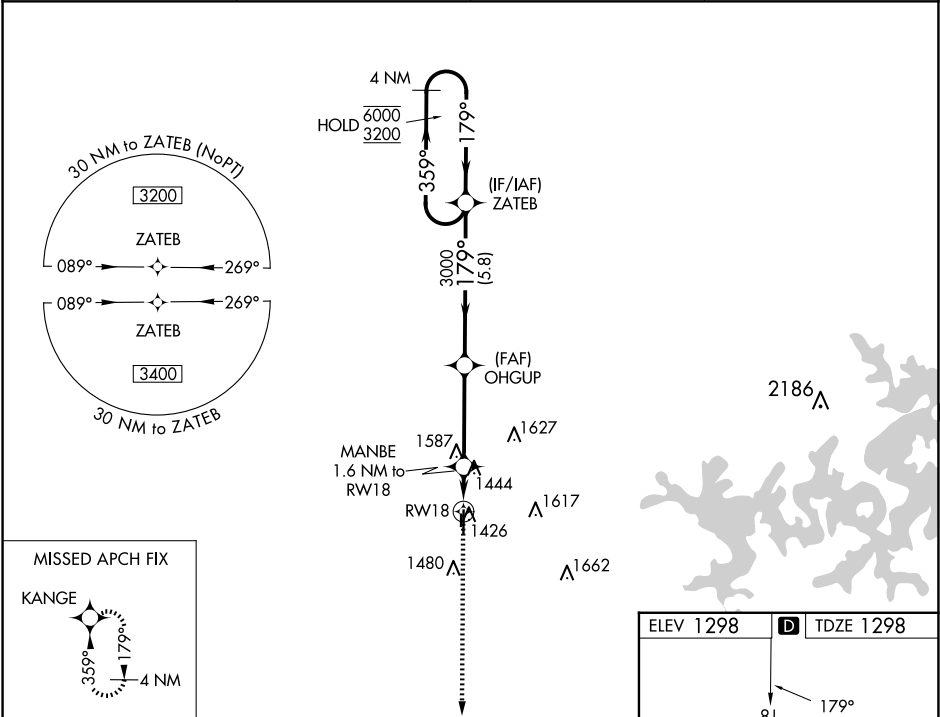


RNP APCH.		MISSED APPROACH: Climb to 3400 direct KANGE and hold.	
<div><div></div><div>Circling NA to Rwy 17 and 35. Rwy 18 helicopter visibility reduction below ¾ SM NA. For uncompensated Baro-VNAV systems, LNAV/VNAV NA below -17°C or above 54°C.</div></div>			
AWOS-3PT 134.975		RAZORBACK APP CON ★ 121.0 (WEST) 244.575	
		CLNC DEL 121.05 263.125	UNICOM 122.975 (CTAF) <div></div>



<div><div>3400</div><div>KANGE</div></div>		<div><div>MANBE</div><div>1.6 NM to RW18</div></div>		<div><div>OHGUP</div><div>3000</div></div>		<div><div>ZATEB</div><div>4 NM Holding Pattern</div></div>	
<div><div>*LNAV only.</div><div>RW18</div></div>		<div><div>1900*</div><div>3000</div></div>		<div><div>179°</div><div>359°</div><div>179°</div></div>		<div><div>6000</div><div>3200</div></div>	
<div><div>GP 3.00°</div><div>TCH 45</div></div>		<div><div>1.6 NM</div><div>3.6 NM</div><div>5.8 NM</div></div>					
CATEGORY	A		B		C		D
LPV DA	1548-1		250 (300-1)				
LNAV/VNAV DA	1688-1½		390 (400-1½)				
LNAV MDA	1700-1 402 (500-1)		1700-1½ 402 (500-1½)				
<div></div> CIRCLING	1780-1 482 (500-1)		1920-1¾ 622 (700-1¾)		1940-2 642 (700-2)		

