

VORTAC RQZ	APP CRS	Rwy Ldg	5010
112.2	313°	TDZE	665
Chan 59		Apt Elev	689

VOR RWY 34

ABERNATHY FLD (GZS)

DME required.

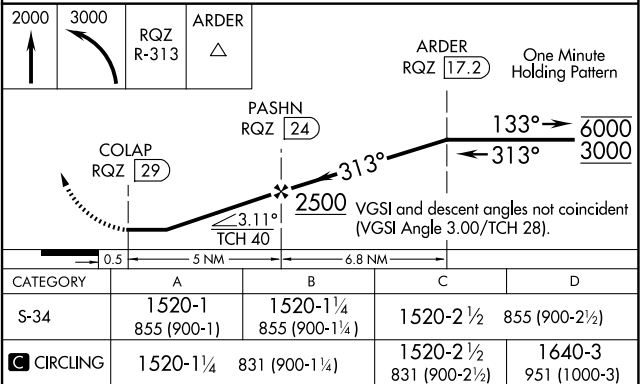
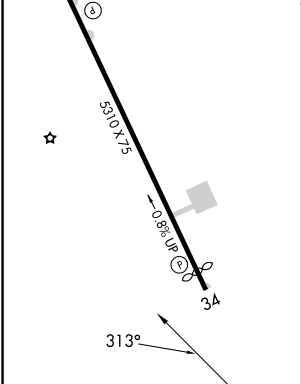
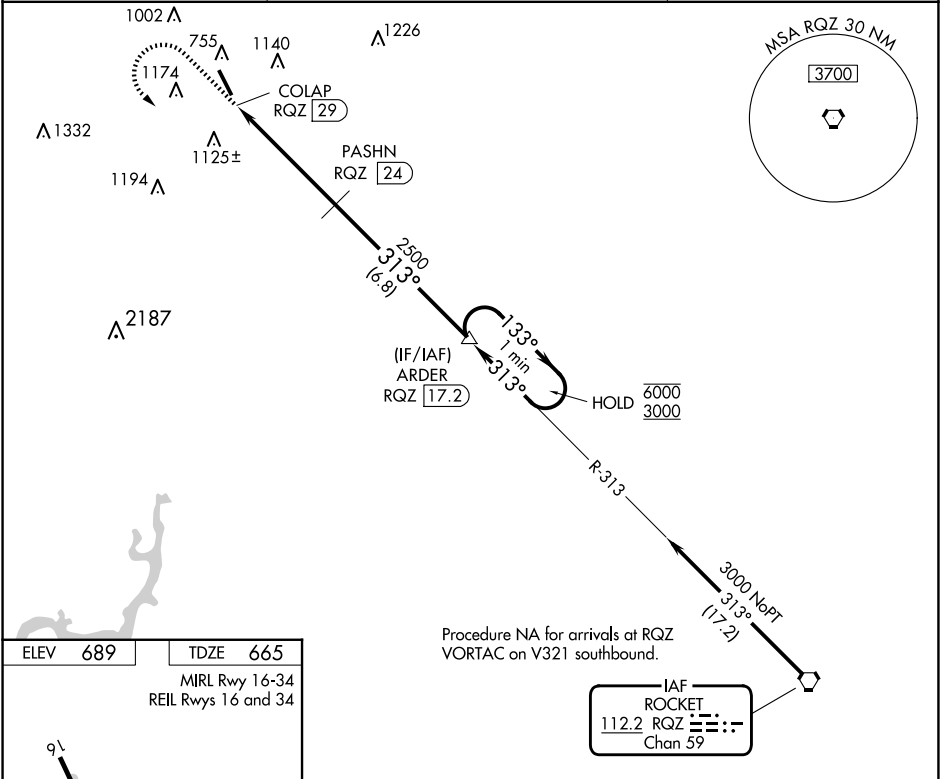
▼

NA

Circling Rwy 16 NA at night. Rwy 34 helicopter visibility reduction below $\frac{3}{4}$ SM NA. When local altimeter setting not received, use MDQ altimeter setting and increase all MDA 100 feet and increase S-34 Cats A/B visibility $\frac{1}{4}$ SM and Cats C/D visibility $\frac{1}{2}$ SM; increase Circling Cat B visibility $\frac{1}{4}$ SM and Cat C visibility $\frac{1}{2}$ SM.

MISSED APPROACH: Climb to 2000 then climbing left turn to 3000 on RQZ VORTAC R-313 to ARDER/RQZ 17.2 DME and hold.

AWOS-3	MEMPHIS CENTER	UNICOM
118.275	125.85 379.25	122.8 (CTAF)



SE-1, 10 JUL 2025 to 07 AUG 2025

SE-1, 10 JUL 2025 to 07 AUG 2025