

WAAS CH <b>77882</b> <b>W16A</b>	APP CRS <b>155°</b>	Rwy Ldg TDZE <b>689</b> Apt Elev <b>689</b>
--	------------------------	---

RNAV (GPS) RWY 16

ABERNATHY FLD (GZS)

RNP APCH - GPS.

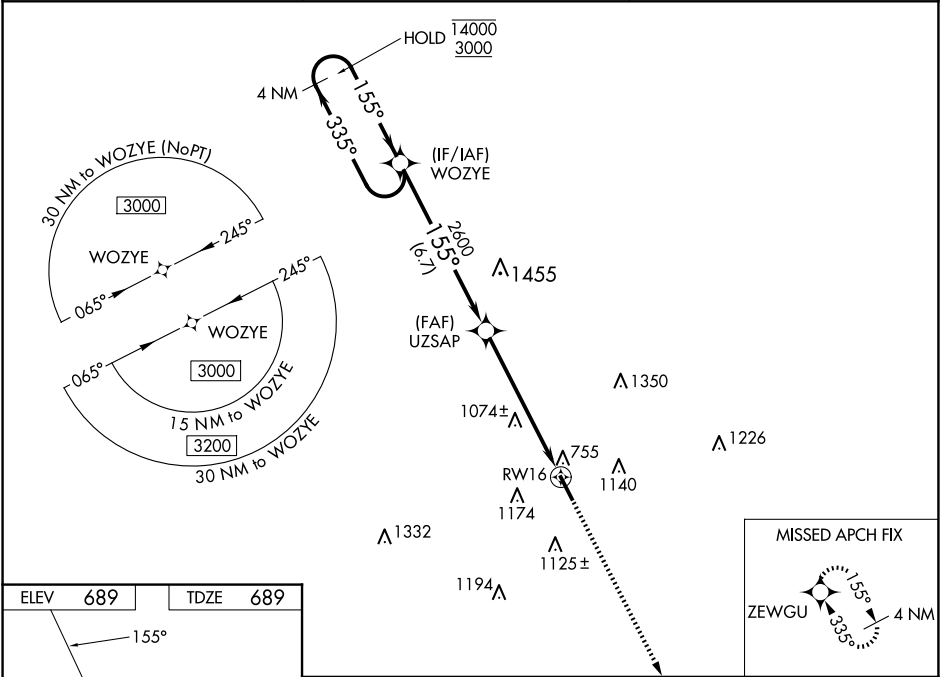
▼

▲ NA

For uncompensated Baro-VNAV systems, LNAV/VNAV NA below -16°C or above 54°C. Baro-VNAV and VDP NA when using MDQ altimeter setting. Rwy 16 helicopter visibility reduction below ¾ SM NA. When local altimeter setting not received, use MDQ altimeter setting: increase LPV DA to 1245 feet, and all visibilities ¼ SM; increase LNAV/VNAV DA to 1362 feet and all visibilities ⅓ SM; increase all MDAs 100 feet and LNAV visibility Cat B ¼ SM, Cats C and D ⅓ SM, and Circling visibility Cats A and B ¼ SM and Cat C ½ SM.

MISSED APPROACH:  
Climb to 3000 direct  
ZEWGU and hold.

AWOS-3 <b>118.275</b>	MEMPHIS CENTER <b>125.85 379.25</b>	UNICOM <b>122.8 (CTAF)</b>
--------------------------	--	-------------------------------



ELEV 689

TDZE 689

155°

91

5310 X 75

3A

0.8% UP

MIRL Rwy 16-34  
REIL Rws 16 and 34

4 NM Holding Pattern		VGSI and RNAV glidepath not coincident (VGSI Angle 3.80/TCH 23).		3000	ZEWGU
WOZY		UZSAP		2600	1.6 NM to RWY 16
14000 3000		GP 3.00° TCH 45		2600	RWY 16
		6.7 NM		4.3 NM	1.6 NM
CATEGORY	A	B	C	D	
LPV DA	1164-1⅜ 475 (500-1⅜)				
LNAV/VNAV DA	1281-1¾ 592 (600-1¾)				
LNAV MDA	1340-1	651 (700-1)	1340-1⅞	651 (700-1⅞)	
CIRCLING	1420-1 731 (800-1)	1480-1 791 (800-1)	1480-2¼ 791 (800-2¼)	1640-3 951 (1000-3)	