

APP CRS	Rwy Idg	5002
210°	TDZE	755
	Apt Elev	757

RNAV (GPS) Y RWY 23

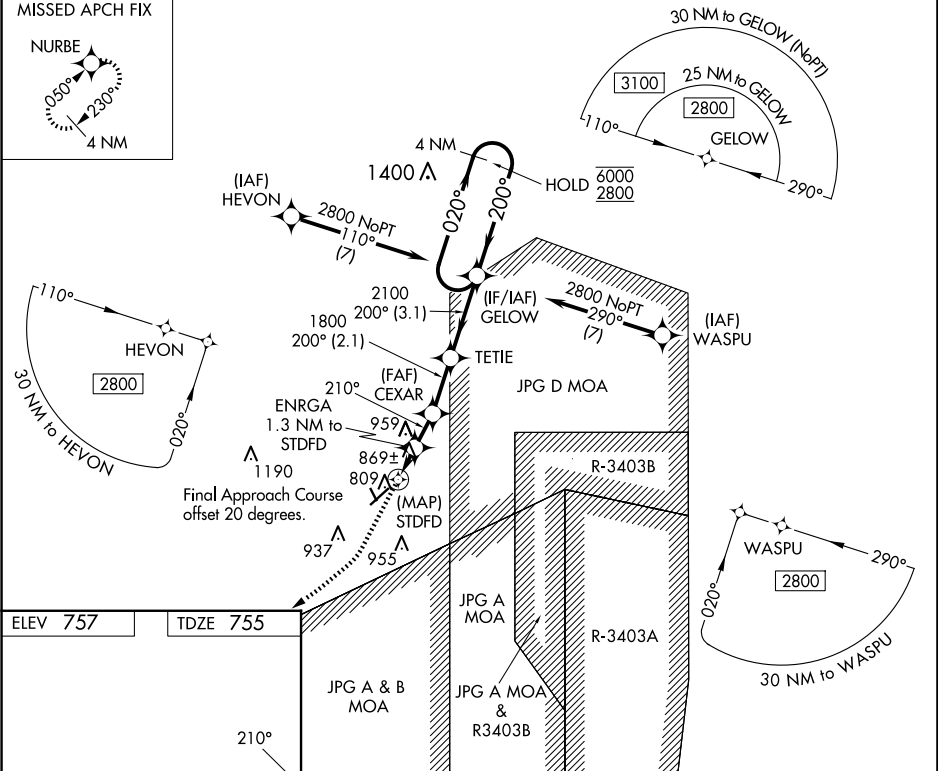
NORTH VERNON (OVO)

RNP APCH - GPS

NA Circling to Rwy 15, 33 NA at night. When local altimeter setting not received, use Shelbyville altimeter setting and increase all MDAs 100 feet, and LNAV visibility Cat C ¾ SM, and Circling visibility Cat C ¼ SM. VDP NA when using Shelbyville Muni altimeter setting.

MISSED APPROACH: Climb to 1200 then climbing right turn to 2700 direct NURBE and hold.

AWOS-3	INDIANAPOLIS APP CON	UNICOM
120.625	134.85 317.8	122.7 (CTAF) 0



ELEV 757	TDZE 755	VGS and descent angles not coincident (VGS Angle 3.00/TCH 27).			
MIRL Rwy 5-23 0		MIRL Rwy 15-33			
NORTH VERNON, INDIANA		NORTH VERNON (OVO)			
Amdt 1 22FEB24		39°03'N - 85°36'W			
		RNAV (GPS) Y RWY 23			