

WAAS CH <b>48812</b> <b>W18A</b>	APP CRS <b>184°</b>	Rwy Idg TDZE Apt Elev	<b>4750</b> <b>609</b> <b>614</b>
--	------------------------	-----------------------------	---

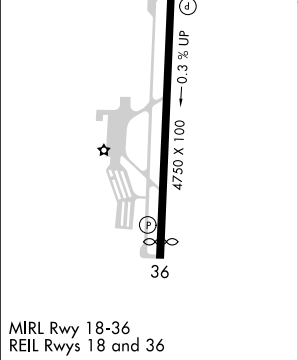
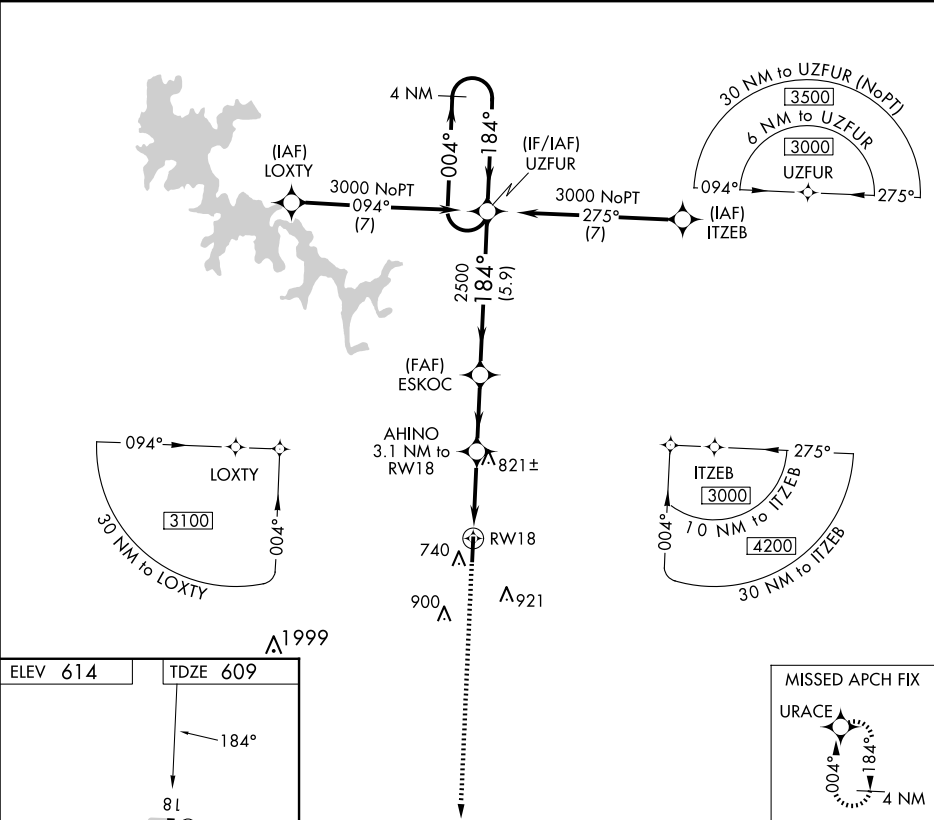
RNAV (GPS) RWY 18

MURFREESBORO MUNI (MBT)

For uncompensated Baro-VNAV systems, LNAV/VNAV NA below -16°C (4°F) or above 54°C (130°F). DME/DME RNP-0.3 NA.

MISSED APPROACH:  
Climb to 3000 direct  
URACE and hold.

AWOS-3 <b>133.975</b>	NASHVILLE APP CON <b>118.4 360.7</b>	GCO <b>135.075</b>	UNICOM <b>123.075</b> (CTAF)
--------------------------	---	-----------------------	---------------------------------



3000 URACE				VGSI and descent angles not coincident (VGSI Angle 3.00/TCH 20).				4 NM Holding Pattern			
URACE				AHINO 3.1 NM to RW18				UZFUR			
RW18				*1.4 NM to RW18				*LNAV only.			
1.4				1.7 NM				2.7 NM			
B				C				D			
LPV DA				859-3/4				250 (300-3/4)			
LNAV/VNAV DA				898-7/8				289 (300-7/8)			
LNAV MDA				1080-1				471 (500-1)			
CIRCLING				1080-1				466 (500-1)			
								1080-1 3/8			
								471 (500-1 3/8)			
								1280-1 3/4			
								666 (700-1 3/4)			