

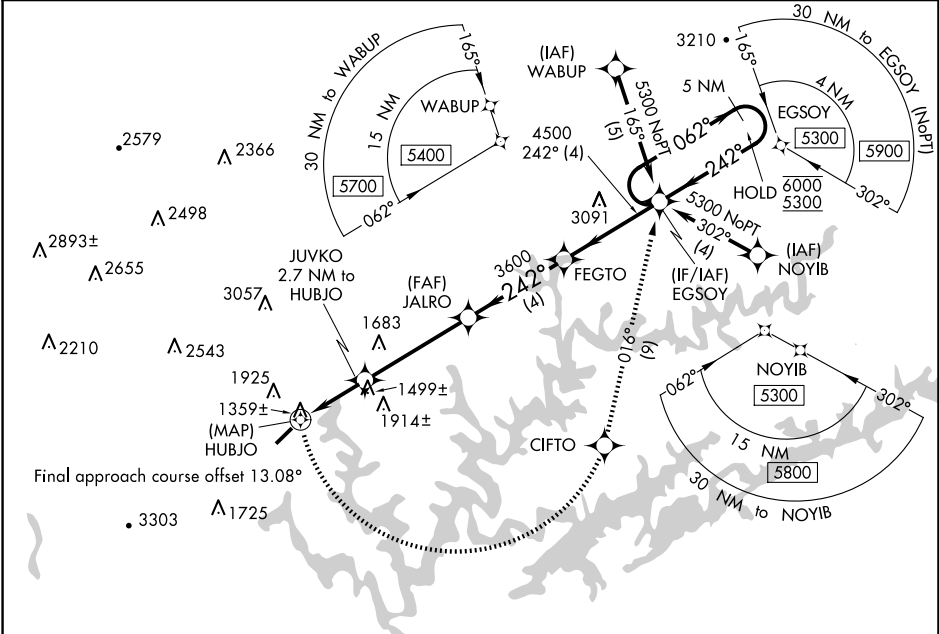
WAAS CH 77736 W23A	APP CRS 242°	Rwy Idg TDZE Apt Elev	4000 1180 1180
--	------------------------	-----------------------------	---

RNAV (GPS) RWY 23
COLONEL TOMMY C STINER AIRFIELD (JAU)

RNP APCH.

<p>▼ Circling NA northwest of Rwy 5-23. Rwy 23 helicopter visibility reduction below ¾ SM NA.</p>	<p>MISSED APPROACH: Climbing left turn to 5300 direct CFTO and on track 016° to EGSOY and hold, continue climb-in-hold to 5300.</p>
---	---

AWOS-3 124.975	ATLANTA CENTER 133.6 254.3	UNICOM 122.8 (CTAF) 0
--------------------------	--------------------------------------	---------------------------------



ELEV 1180		TDZE 1180	
Visual Segment - Obstacles.			
5300 CFTO tr 016° EGSOY			
JUVKO 2.7 NM to HUBJO			
HUBJO 1.4 NM to HUBJO			
JALRO			
FEGTO			
EGSOY			
5 NM Holding Pattern			
6000 242° 062° 5300			
2220 3600 4500			
0.5 1.4 1.3 4.3 NM 4 NM			
CATEGORY A B C D			
LP MDA 1640-1 460 (500-1) NA			
LNAV MDA 1920-1 740 (800-1) NA			
CIRCLING 1920-1 740 (800-1) NA			

MIRL Rwy 5-23 0
REIL Rwy 5 and 23 0

SE-1, 10 JUL 2025 to 07 AUG 2025

SE-1, 10 JUL 2025 to 07 AUG 2025