

WAAS CH 53640 W17A	APP CRS 174°	Rwy Idg 6006 TDZE 111 Apt Elev 112
--	------------------------	---

RNAV (GPS) RWY 17

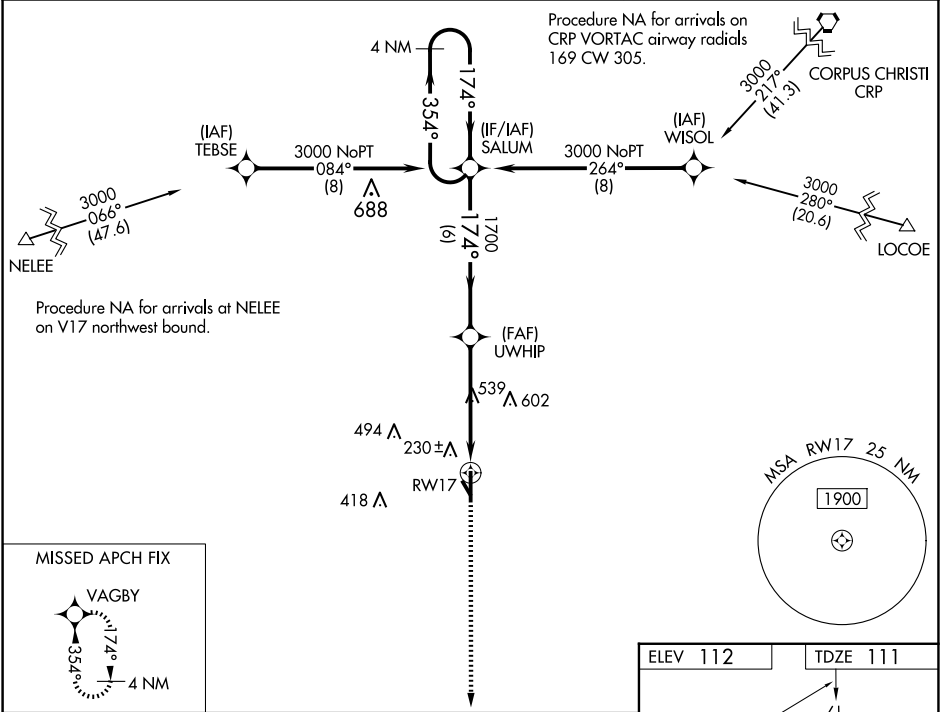
BROOKS COUNTY (BKS)

⚠

For uncompensated Baro-VNAV systems, LNAV/VNAV NA below -15°C (5°F) or above 54°C (130°F).
Circling Rwy 14 NA at night. Rwy 17 helicopter visibility reduction below ¾ SM NA.
DME/DME RNP-0.3 NA. Circling NA for Cat D west of Rwy 17-35.

MISSED APPROACH: Climb to 3000 direct VAGBY and hold.

AWOS-3PT 118.125	KINGSVILLE APP CON ★ 119.9 290.45	UNICOM 122.8 (CTAF) 0
----------------------------	---	---------------------------------



4 NM Holding Pattern		SALUM		UWHIP		RWY 17	
3000		←354°		174°→		*LNAV only.	
GP 3.00°		TCH 45		1700		*2.1 NM to RWY 17	
6 NM		2.7 NM		2.1 NM			
CATEGORY	A	B	C	D			
LPV DA	361-1 250 (300-1)						
LNAV/VNAV DA	361-1 250 (300-1)						
LNAV MDA	840-1 729 (800-1)			840-2 729 (800-2)			
CIRCLING	840-1 728 (800-1)			940-2½ 828 (900-2½)		940-2¾ 828 (900-2¾)	
FALFURRIAS, TEXAS							BROOKS COUNTY (BKS)
Amdt 1 17AUG17							27°12'N-98°07'W
RNAV (GPS) RWY 17							

SC-3, 10 JUL 2025 to 07 AUG 2025

SC-3, 10 JUL 2025 to 07 AUG 2025