

APP CRS 004°	Rwy Idg TDZE Apt Elev	4003 736 739
------------------------	-----------------------------	---

RNAV (GPS) RWY 36

ROMEO STATE (D98)

RNP APCH- GPS.

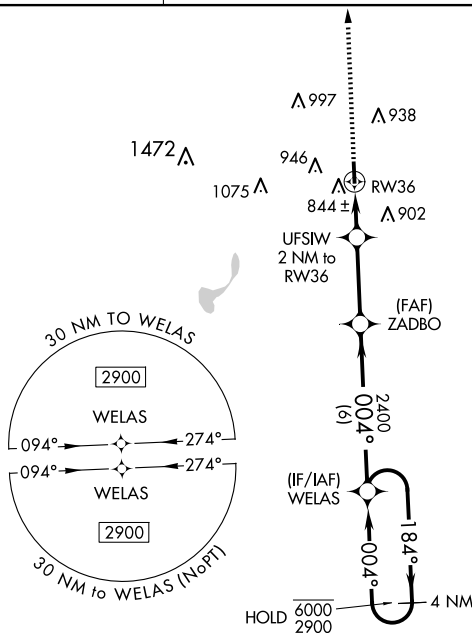
T Circling Rwy 18 NA at night. Rwy 36 helicopter visibility reduction below 1 SM NA.
A NA Use Coleman A Young Muni altimeter setting.

MISSED APPROACH: Climb to 2900 direct UTEBE and hold.

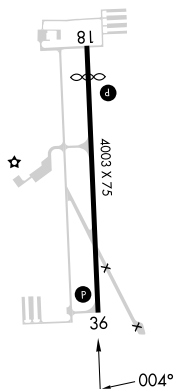
DET ASOS
124.875

SELFREDGE APP CON★
119.6 391.9

UNICOM
122.8 (CTAF) **L**



ELEV	739		TDZE	736
------	-----	--	------	-----



MIRL Rwy 18-36 **L**
REIL Rwy 18 and 36 **L**

Visual Segment - Obstacles.

Diagram illustrating the Visual Segment - Obstacles. The segment is divided into three parts: A (2 NM), B (3.1 NM), and C (6 NM). The segment ends with a 4 NM Holding Pattern. Obstacles are marked with 'x' and labeled with their MSL altitudes: 1400, 2400, and 6000. The diagram also shows the UTEBE and UFSIW obstacles.

CATEGORY	A	B	C	D
LNAV MDA	1180-1	444 (500-1)	1180-1 $\frac{3}{8}$	444 (500-1 $\frac{3}{8}$)
CIRCLING	1300-1 561 (600-1)	1420-1 681 (700-1)	1420-2 681 (700-2)	1480-2 $\frac{1}{2}$ 741 (800-2 $\frac{1}{2}$)