

APP CRS
184°

Rwy Idg
TDZE
739

Apt Elev
739

RNAV (GPS) RWY 18

ROMEO STATE (D98)

RNP APCH - GPS.

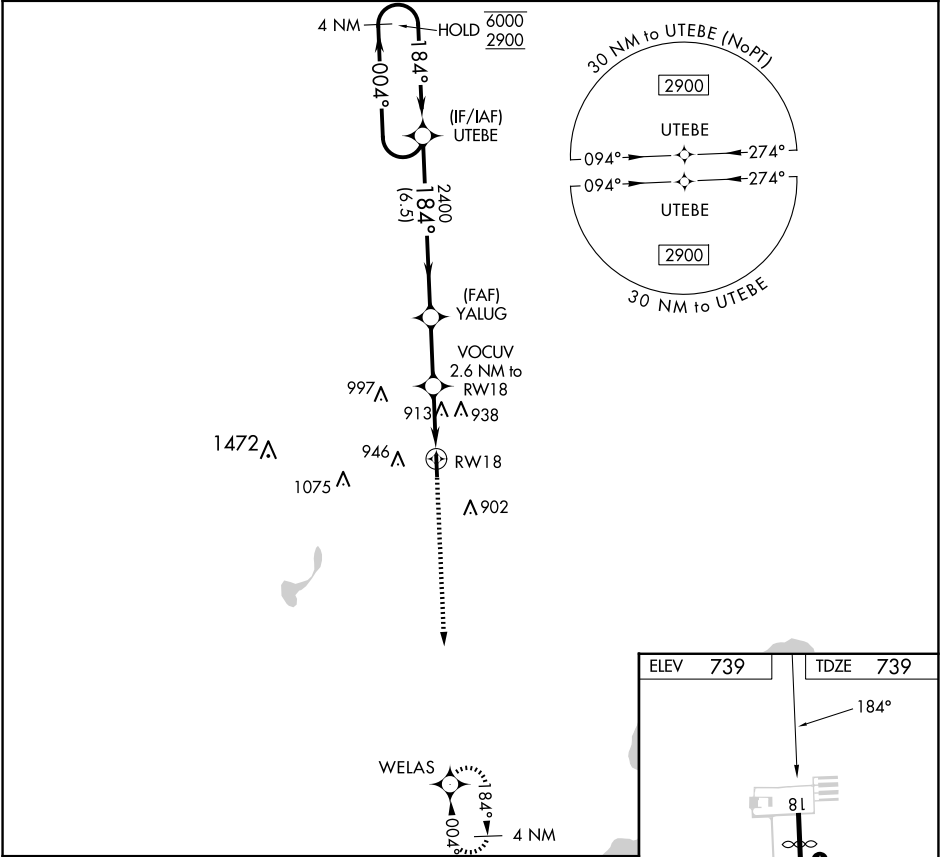
▼

NA

Rwy 18 helicopter visibility reduction below 1 SM NA. Use Coleman A Young Muni altimeter setting. Straight-in and Circling Rwy 18 NA at night.

MISSED APPROACH:
Climb to 2900 direct WELAS and hold.

DET ASOS 124.875	SELFDRIDGE APP CON★ 119.6 391.9	UNICOM 122.8 (CTAF) 0
---------------------	------------------------------------	--------------------------



4 NM Holding Pattern

UTEBE

Visual Segment - Obstacles.

2900

WELAS

6000
2900

004°

184°

184°

2400

1600

6.5 NM

2.5 NM

2.6 NM

YALUG

VOCUV
2.6 NM to RW18

RW18

CATEGORY	A	B	C	D
INAV MDA	1240-1	501 (600-1)	1240-1 $\frac{3}{8}$	501 (600-1 $\frac{3}{8}$)
CIRCLING	1300-1 561 (600-1)	1420-1 681 (700-1)	1420-2 681 (700-2)	1480-2 $\frac{1}{2}$ 741 (800-2 $\frac{1}{2}$)

ELEV 739

TDZE 739

184°

81

4003 X 75

36

MIRL Rwy 18-36 0

REIL Rwys 18 and 36 0