

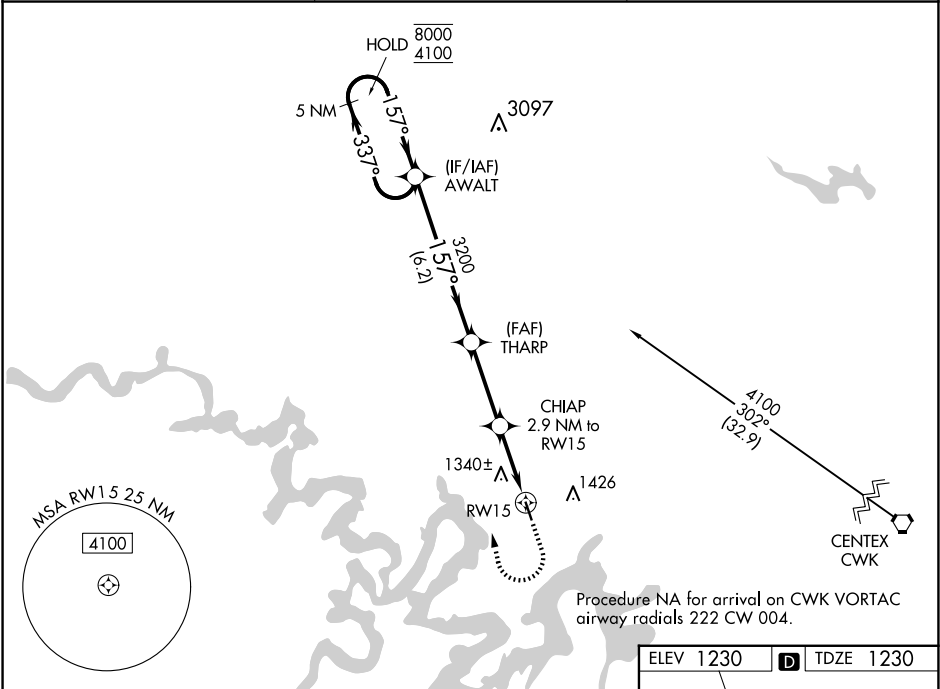
WAAS CH <b>81831</b> <b>W15A</b>	APP CRS <b>157°</b>	Rwy Idg TDZE <b>1230</b> Apt Elev <b>1230</b>
--	------------------------	---

RNAV (GPS) RWY 15

LAGO VISTA TX/RUSTY ALLEN (RYW)

RNP APCH - GPS.	MISSED APPROACH: Climb to 1700 then climbing right turn to 4100 direct AWALT and hold, continue climb-in-hold to 4100.
▼ For uncompensated Baro-VNAV systems, LNAV/VNAV NA below -17°C or above 54°C. Rwy 15 helicopter visibility reduction below ¾ SM NA.	

AWOS-3PT <b>119.375</b>	AUSTIN APP CON <b>119.0 370.85</b>	UNICOM <b>122.725</b> (CTAF) <b>0</b>
----------------------------	---------------------------------------	--



VGSI and RNAV glidepath not coincident (VGSI Angle 4.00/TCH 56).				
5 NM Holding Pattern		AWALT		
8000 ← 337° 4100 → 157°		1700 4100 AWALT		
GP 3.00° TCH 40		THARP 3200 CHIAP 2.9 NM to RW15 0.8 NM to RW15		
		6.2 NM 3.2 NM 2.1 NM 0.8		
CATEGORY	A	B	C	D
LPV DA	1480-1	250 (300-1)	NA	
LNAV/VNAV DA	1641-1½	411 (500-1½)	NA	
LNAV MDA	1620-1	390 (400-1)	NA	
CIRCLING	1660-1 430 (500-1)	1860-1 630 (700-1)	NA	

