

SC-3, 10 JUL 2025 to 07 AUG 2025

TOP ALTITUDE:  
ASSIGNED BY ATC

AWOS-3PT  
119.375  
UNICOM (CTAF)  
122.725  
AUSTIN DEP CON  
119.0 370.85

SAN ANGELO  
SJT

TAKEOFF MINIMUMS  
Rwys 15, 33: Standard.

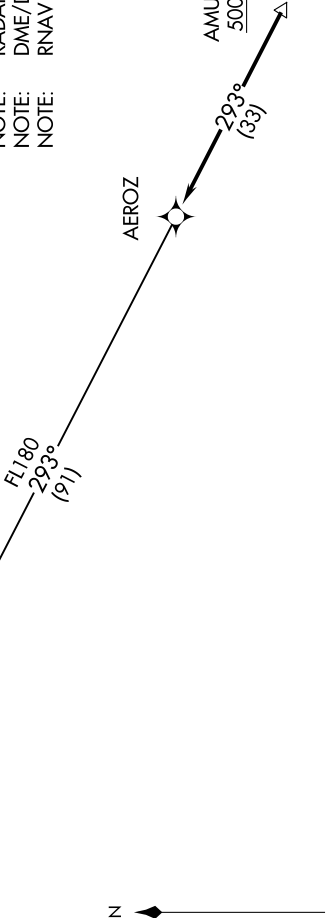
NOTE: RADAR required.  
NOTE: DME/DME/IRU or GPS required.  
NOTE: RNAV 1.

FL180  
293°  
(91)

AEROZ

AMUSE  
5000

337° 157°



NOTE: Chart not to scale.

DEPARTURE ROUTE DESCRIPTION

TAKEOFF RUNWAY 15: Climb on heading 157° or as assigned by ATC for vectors to cross AMUSE at or above 5000, thence....  
TAKEOFF RUNWAY 33: Climb on heading 337° or as assigned by ATC for vectors to cross AMUSE at or above 5000, thence....  
... on track 293° to AEROZ, then on SAN ANGELO TRANSITION. Maintain altitude assigned by ATC. Expect filed altitude 10 minutes after departure.

SAN ANGELO TRANSITION (AEROZ2.SJT)