

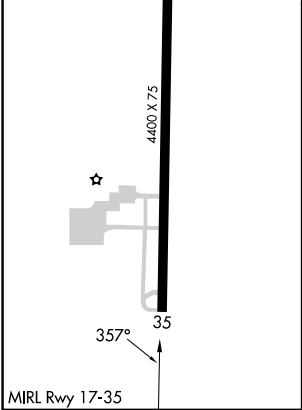
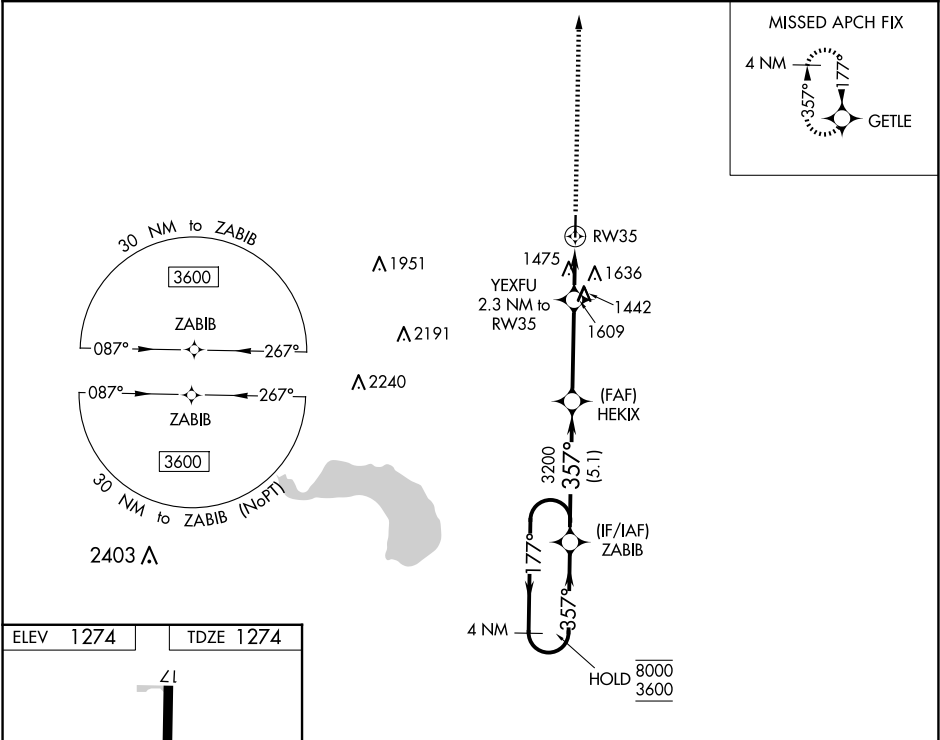
WAAS CH 82443 W35A	APP CRS 357°	Rwy Idg TDZE Apt Elev	4400 1274 1274
--	------------------------	-----------------------------	---

RNAV (GPS) RWY 35

FAIRVIEW MUNI (6K4)

RNP APCH.	Procedure NA at night. Rwy 35 helicopter visibility reduction below 1 SM NA. Baro-VNAV NA. Use Vance AFB altimeter setting; when not received, use Watonga altimeter setting; increase all MDA 40 feet, and increase LP and LNAV visibility Cats C/D ½ SM.	MISSED APPROACH: Climb to 3600 direct to GETLE and hold.
-----------	---	--

AWOS-3PT 120.0	KEND ATIS ★ 115.4 263.15	VANCE APP CON ★ 126.75 346.325	UNICOM 122.8 (CTAF)
--------------------------	------------------------------------	--	-------------------------------



3600

↑

GETLE

✦

4 NM Holding Pattern

ZABIB

177° → 8000

← 357° 3600

HEKIX

YEXFU

2.3 NM to RW35

≤ 3.00°

TCH 40

3200

357°

RW35

2040

2.3 NM

3.6 NM

5.1 NM

CATEGORY	A	B	C	D
LP MDA	1800-1	526 (600-1)	1800-1½	526 (600-1½)
LNAV MDA	1940-1	666 (700-1)	1940-1⅞	666 (700-1⅞)
<div>CIRCLING</div> <div>1940-1</div> <div>666 (700-1)</div>	<div>2020-1</div> <div>746 (800-1)</div>	<div>2020-2¼</div> <div>746 (800-2¼)</div>	<div>2180-3</div> <div>906 (1000-3)</div>	

SC-1, 10 JUL 2025 to 07 AUG 2025

SC-1, 10 JUL 2025 to 07 AUG 2025