

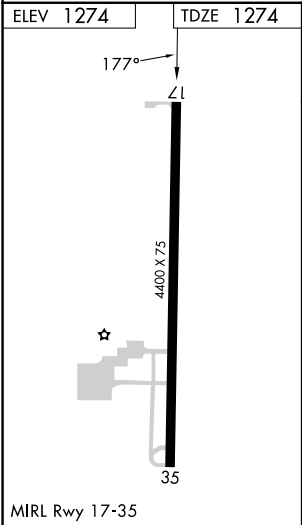
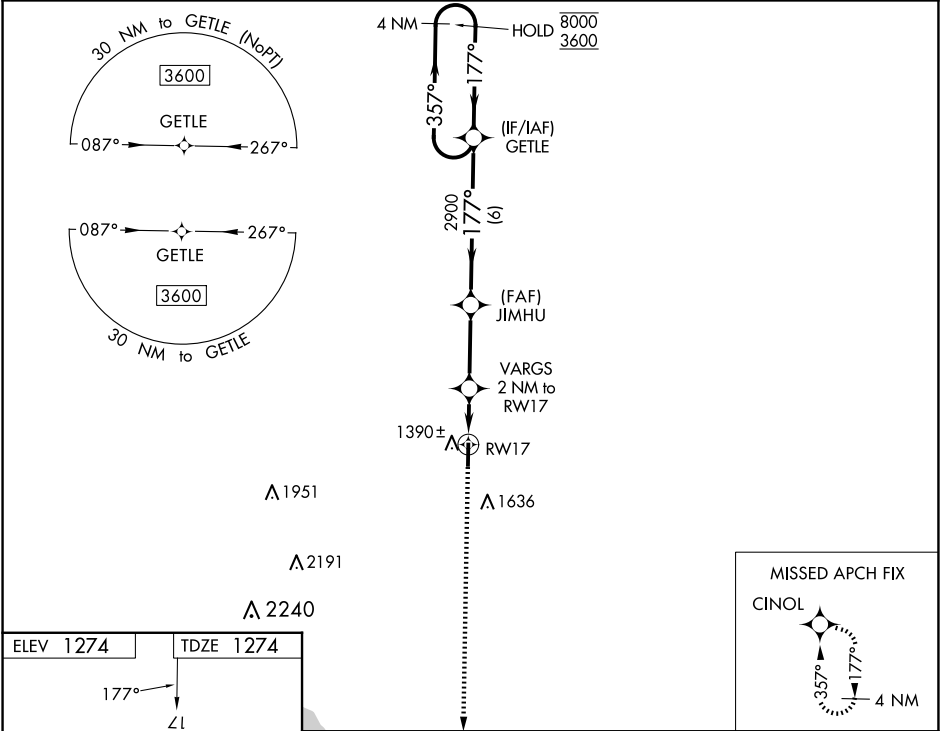
| | | |
|--|------------------------|---|
| WAAS CH 62942 W17A | APP CRS 177° | Rwy Idg TDZE 1274 Apt Elev 1274 |
|--|------------------------|---|

RNAV (GPS) RWY 17

FAIRVIEW MUNI (6K4)

| | | |
|-----------|---|---|
| RNP APCH. | <div><div>▼</div><div>▲ NA</div><div>Circling Rwy 35 NA at night. Rwy 17 helicopter visibility reduction below $\frac{3}{4}$ SM NA. Baro-VNAV NA. Use Vance AFB altimeter setting; when not received, use Watonga altimeter setting; increase LPV DA to 1622 feet and all visibilities $\frac{1}{4}$ SM; increase LNAV/VNAV DA to 1678 feet and all visibilities $\frac{1}{4}$ SM; increase all MDA 40 feet.</div></div> | MISSED APPROACH: Climb to 3600 direct CINOL and hold. |
|-----------|---|---|

| | | | |
|--------------------------|------------------------------------|--|-------------------------------|
| AWOS-3PT 120.0 | KEND ATIS ★ 115.4 263.15 | VANCE APP CON ★ 126.75 346.325 | UNICOM 122.8 (CTAF) |
|--------------------------|------------------------------------|--|-------------------------------|



| | | | | |
|--------------|-----------------------|-----------------------|--|----------------------------|
| 3600 | CINOL | JIMHU | GETLE | 4 NM Holding Pattern |
| *LNAV only. | VARGS 2 NM to RW17 | 2900 | 177° | 8000 3600 |
| RW17 | 1940* | 2900 | 177° | GP 3.00° TCH 40 |
| 2 NM | 3 NM | 6 NM | | |
| CATEGORY | A | B | C | D |
| LPV DA | 1592-1 318 (400-1) | | | |
| LNAV/VNAV DA | 1648-1 374 (400-1) | | | |
| LNAV MDA | 1720-1 | 446 (500-1) | 1720-1 $\frac{3}{8}$ | 446 (500-1 $\frac{3}{8}$) |
| CIRCLING | 1840-1 566 (600-1) | 2020-1 746 (800-1) | 2020-2 $\frac{1}{4}$ 746 (800-2 $\frac{1}{4}$) | 2180-3 906 (1000-3) |

SC-1, 10 JUL 2025 to 07 AUG 2025

SC-1, 10 JUL 2025 to 07 AUG 2025