

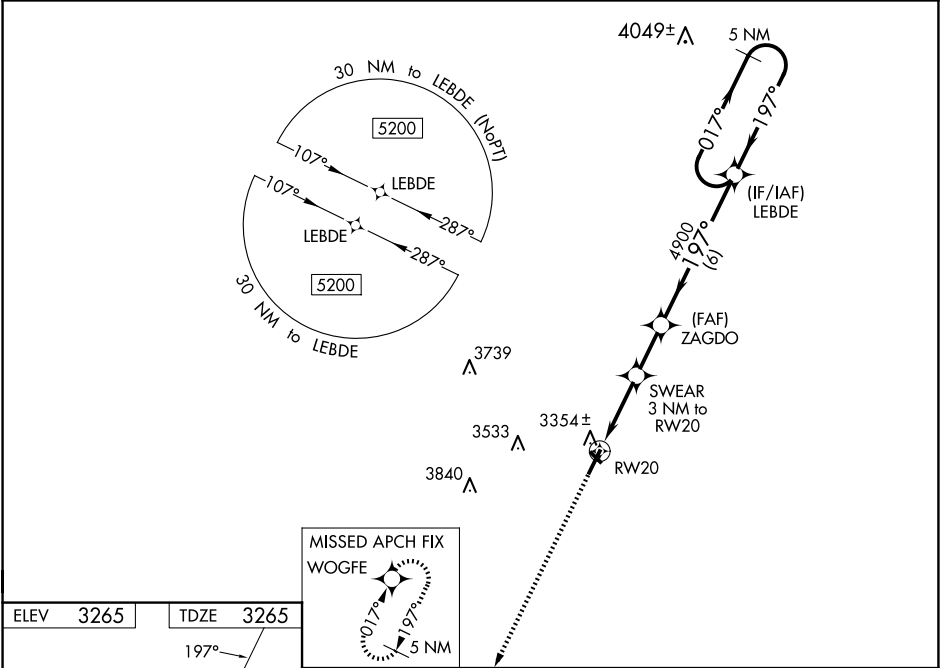
▼

▲NA

Baro-VNAV NA. Circling Rwy 13, 31 NA at night. Rwy 20 helicopter visibility reduction below ¾ SM NA. DME/DME RNP-0.3 NA. Use Lubbock altimeter setting, when not received, use Seminole altimeter setting and increase LPV DA to 3609 feet; increase LNAV/VNAV DA to 3629 feet; increase all MDA 20 feet and LNAV Cat C/D visibility ⅓ SM.

MISSED APPROACH: Climb to 5200 direct WOGFE and hold.

LBB ASOS 125.3 270.275	LUBBOCK APP CON 119.2 351.8	UNICOM 122.8 (CTAF) 0
---------------------------	--------------------------------	--------------------------



ELEV 3265 TDZE 3265

197°

20

27.65 X 75

5218 X 75

0.4% UP

2

5200

WOGFE

\*LNAV only.

SWEAR 3 NM to RW20

ZAGDO

LEBDE 5 NM Holding Pattern

RW20

\*4260

4900

4900

5200

GP 3.00° TCH 41

CATEGORY	A	B	C	D
LPV DA		3598-1	333 (400-1)	
LNAV/VNAV DA		3618-1	353 (400-1)	
LNAV MDA	3700-1	435 (500-1)	3700-1¼	435 (500-1¼)
CIRCLING	3760-1 495 (500-1)	3920-1 655 (700-1)	3980-2 715 (800-2)	4100-2¾ 835 (900-2¾)