

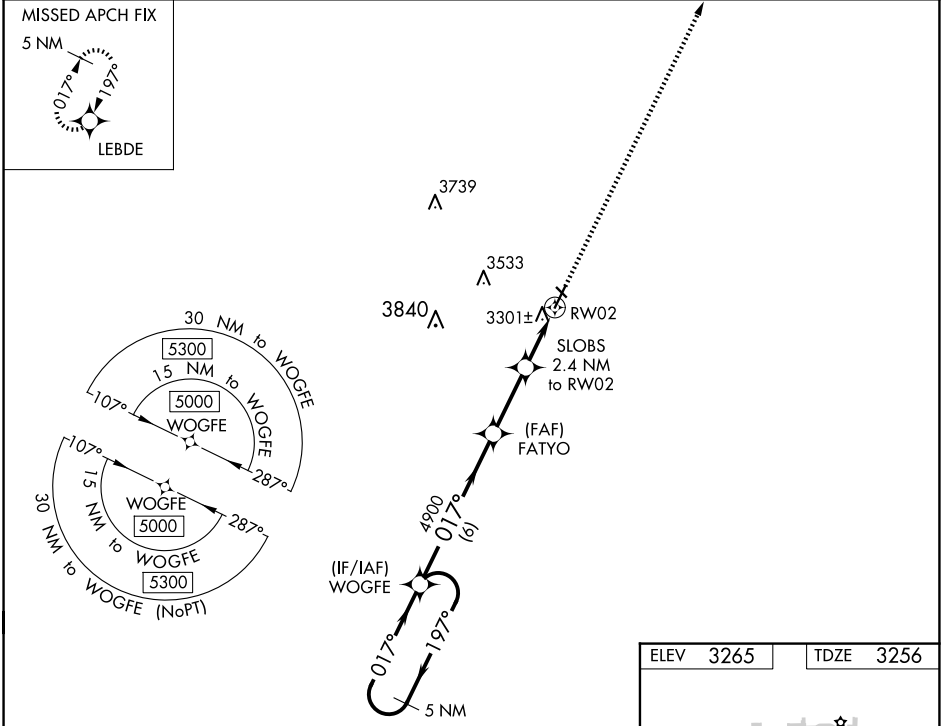
WAAS CH <b>50441</b> <b>W02A</b>	APP CRS <b>017°</b>	Rwy Idg TDZE Apt Elev	<b>5218</b> <b>3256</b> <b>3265</b>
--	------------------------	-----------------------------	---

RNAV (GPS) RWY 2  
TERRY COUNTY (BFE)

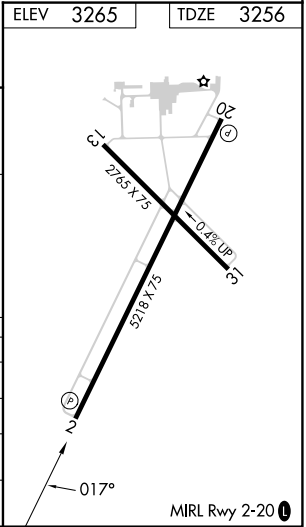
**Baro-VNAV NA.** Circling Rwy 13, 31 NA at night. DME/DME RNP-0.3 NA.  
**Use Lubbock altimeter setting.** When not received, use Seminole altimeter setting and increase LPV DA to 3600; increase LNAV/VNAV DA to 3600; and increase all MDA 20 feet.

**MISSED APPROACH:** Climb to 5200 direct LEBDE and hold.

LBB ASOS <b>125.3 270.275</b>	LUBBOCK APP CON <b>119.2 351.8</b>	UNICOM <b>122.8 (CTAF) 0</b>
----------------------------------	---------------------------------------	---------------------------------



5 NM Holding Pattern		WOGFE	FATYO	SLOBS	RW02
5000		4900	4900	5200	5200
← 197°		017°	017°	017°	017°
GP 3.00°					
TCH 43					
6 NM		2.6 NM	2.4 NM		
CATEGORY	A	B	C	D	
LPV DA		3589-1	333 (400-1)		
LNAV/VNAV DA		3589-1	333 (400-1)		
LNAV MDA	3640-1	384 (400-1)	3640-1 1/8	384 (400-1 1/8)	
CIRCLING	3760-1	3920-1	3980-2	4100-2 3/4	
	495 (500-1)	655 (700-1)	715 (800-2)	835 (900-2 3/4)	



SC-2, 10 JUL 2025 to 07 AUG 2025

SC-2, 10 JUL 2025 to 07 AUG 2025