

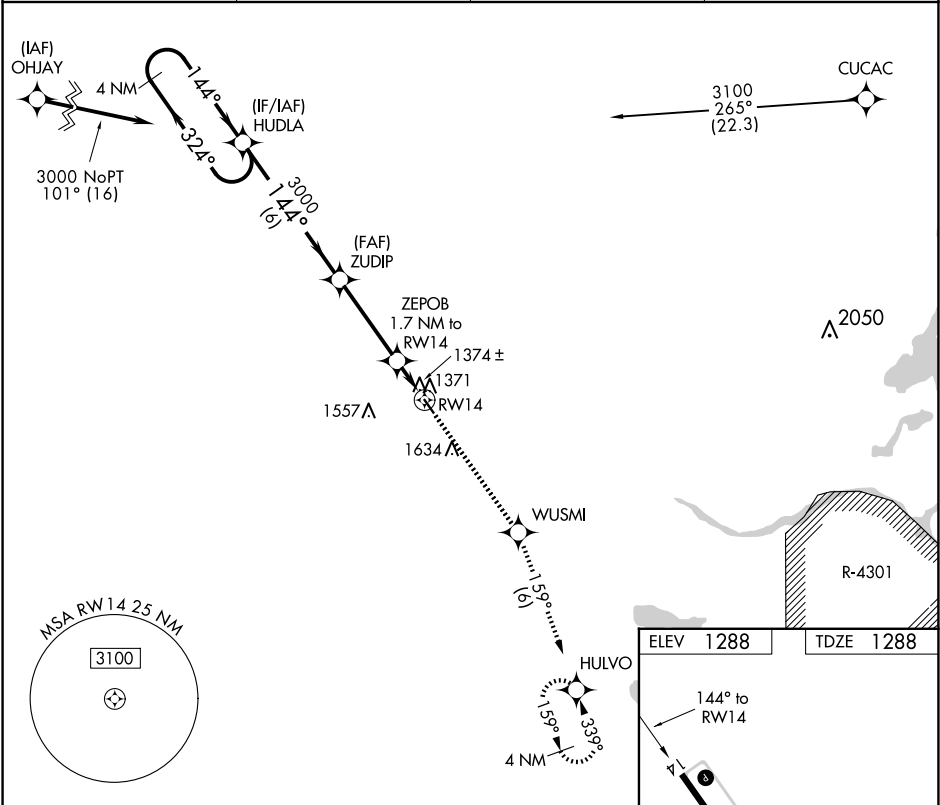
APP CRS	Rwy Idg	3305
144°	TDZE	1288
	Apt Elev	1288

RNAV (GPS) RWY 14  
STAPLES MUNI (SAZ)

**⚠** Rwy 14 Straight-in and Circling minimums NA at night. Rwy 14 helicopter visibility reduction below 1 SM NA. DME/DME RNP-0.3 NA. When local altimeter setting not received, use Pine River altimeter setting and increase all MDA 80 feet and all Cat C visibilities ½ SM.

MISSED APPROACH: Climb to 3000 direct WUSMI and on track 159° to HULVO and hold.

AWOS-3 118.325	MINNEAPOLIS CENTER 118.05 239.0	GCO 121.725	CTAF 122.9 <b>0</b>
-------------------	------------------------------------	----------------	------------------------



VGSI and descent angles not coincident (VGSI Angle 3.00/TCH 27).

4 NM Holding Pattern HUDLA ZUDIP

3000 ← 324° 144° → 3000

3.00° TCH 40 1860 RW14

ZEPOB 1.7 NM to RW14

6 NM 3.6 NM 1.7 NM

CATEGORY	A	B	C	D
LNAV MDA	1640-1 352 (400-1)			
CIRCLING	1780-1 492 (500-1)	1940-1 652 (700-1)	1940-1¾ 652 (700-1¾)	NA

ELEV 1288	TDZE 1288
-----------	-----------

144° to RW14

3305 X75

REIL Rwy 14 and 32 **0**  
MIRL Rwy 14-32 **0**

NC-1, 10 JUL 2025 to 07 AUG 2025

NC-1, 10 JUL 2025 to 07 AUG 2025