

WAAS CH 48905 W29A	APP CRS 291°	Rwy Idg TDZE 1004 Apt Elev 1004
--	------------------------	---

RNAV (GPS) RWY 29

KANSAS CITY/LEE'S SUMMIT RGNL (LXT)

RNP APCH - GPS.

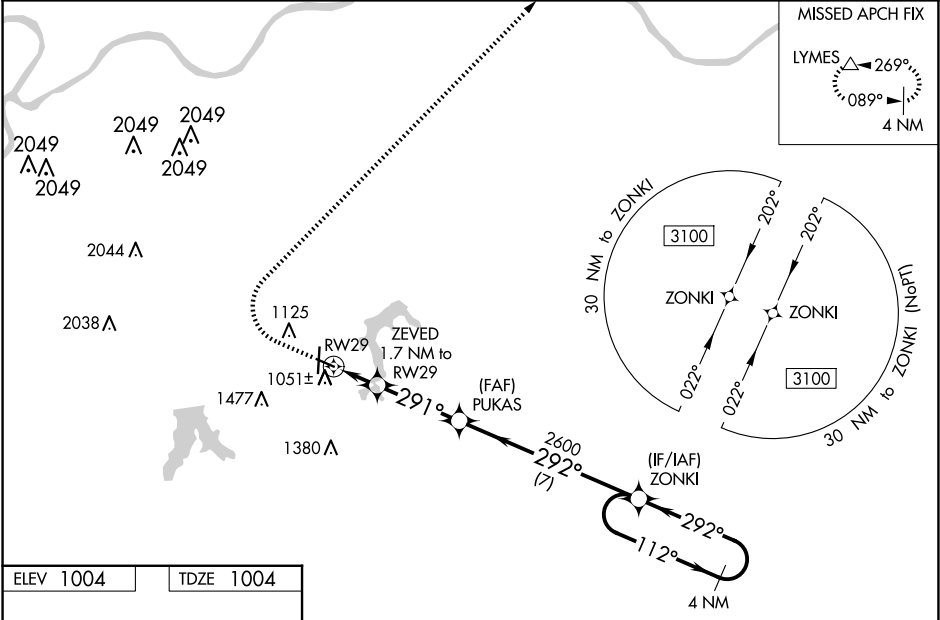
▼

▲

For uncompensated Baro-VNAV systems, LNAV/VNAV NA below -17°C or above 54°C. VDP and Baro-VNAV NA when using Kansas City Downtown/Wheeler Fld altimeter setting. When local altimeter setting not received, use Kansas City Downtown/Wheeler Fld altimeter setting: increase LPV DA to 1322 feet; increase LNAV/VNAV DA to 1359 feet; increase all MDA 80 feet and visibility Cats C and D ¼ SM.

MISSED APPROACH: Climb to 1500 then climbing right turn to 3000 direct LYMES and hold.

ASOS 124.175	KANSAS CITY APP CON 118.4 307.35	CLNC DEL 118.45	UNICOM 122.8 (CTAF) 0
------------------------	--	---------------------------	---------------------------------



ELEV 1004

TDZE 1004

REIL Rwy 11, 18, 29 and 36 0
MIRL Rwy 11-29 and 18-36 0

1500	3000	LYMES				
CATEGORY		A	B	C	D	
LPV	DA	1254-1 250 (300-1)				
LNAV/ VNAV	DA	1291-1 287 (300-1)				
LNAV	MDA	1360-1 356 (400-1)				
CIRCLING		1440-1 436 (500-1)	1540-1 536 (600-1)	1780-2¼ 776 (800-2¼)	1780-2½ 776 (800-2½)	