

WAAS CH <b>82204</b> <b>W18A</b>	APP CRS <b>181°</b>	Rwy Idg TDZE Apt Elev <b>5501</b> <b>999</b> <b>1004</b>
----------------------------------------	------------------------	----------------------------------------------------------------------

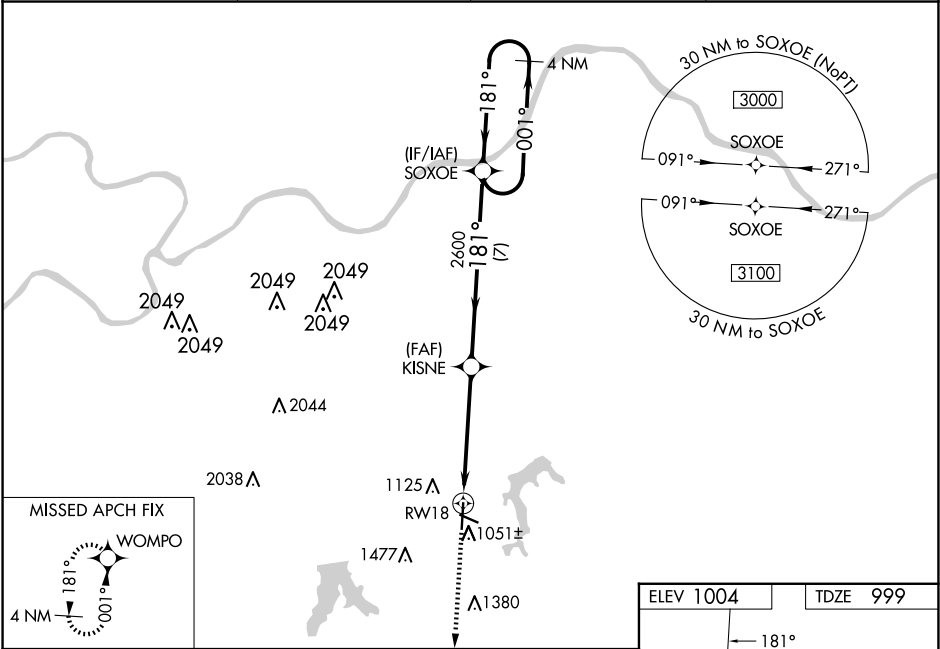
RNAV (GPS) RWY 18

KANSAS CITY/LEE'S SUMMIT RGNL (LXT)

⚠ For uncompensated Baro-VNAV systems, LNAV/VNAV NA below -17°C (2°F) or above 54°C (130°F).  
Rwy 18 helicopter visibility reduction below ¾ SM NA. DME/DME RNP-0.3 NA. Baro-VNAV and VDP NA when using Kansas City Downtown/Wheeler Fld altimeter setting. When local altimeter setting not received, use Kansas City Downtown/Wheeler Fld altimeter setting: increase LPV DA to 1317 feet and all visibilities ¼ SM; increase LNAV/VNAV DA to 1434 feet and all visibilities ¼ SM; increase all MDA 80 feet and LNAV visibility Cat C and D ¾ SM, Circling Cats C and D ¼ SM.

MISSED APPROACH: Climb to 3000 direct WOMPO and hold.

ASOS <b>124.175</b>	KANSAS CITY APP CON <b>118.4 307.35</b>	CLNC DEL <b>118.45</b>	UNICOM <b>122.8</b> (CTAF) <b>0</b>
------------------------	--------------------------------------------	---------------------------	----------------------------------------



3000 ↑ WOMPO		KISNE 2600		SOXOE		4 NM Holding Pattern	
*LNAV only		*1 NM to RW18		2600		001° → 3000 ← 181°	
RW18		2600		GP 3.00° TCH 44			
1 NM		3.9 NM		7 NM			
CATEGORY	A	B	C	D			
LPV DA	1249-¾			250 (300-¾)			
LNAV/ VNAV DA	1366-1			367 (400-1)			
LNAV MDA	1360-1			361 (400-1)			
CIRCLING	1440-1 436 (500-1)	1540-1 536 (600-1)	1780-2¼ 776 (800-2¼)	1780-2½ 776 (800-2½)			

