

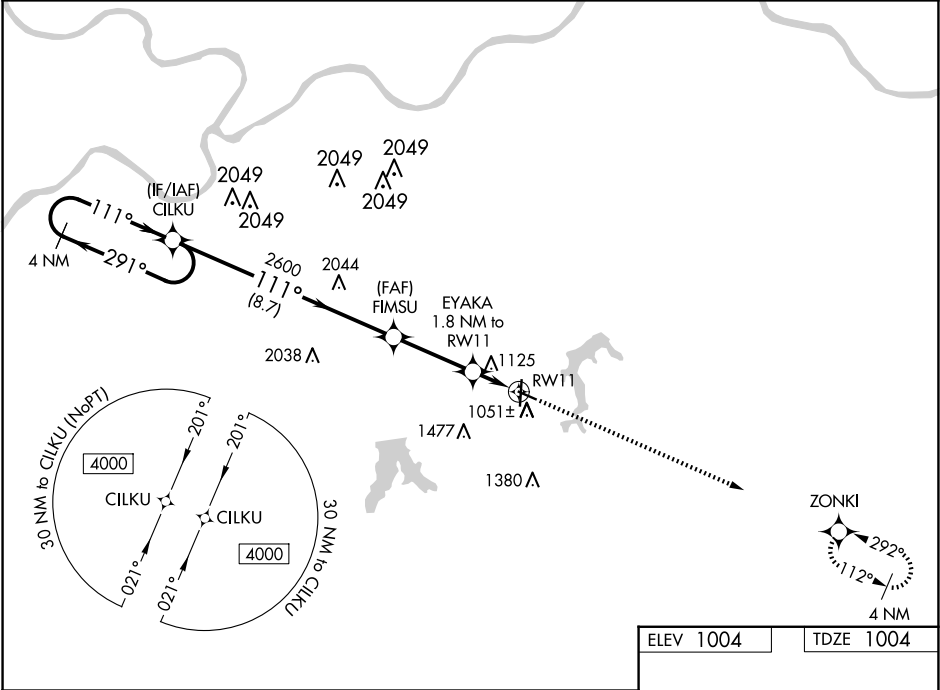
WAAS CH 99405 W11A	APP CRS 111°	Rwy Idg 4000 TDZE 1004 Apt Elev 1004
--	------------------------	---

RNAV (GPS) RWY 11

KANSAS CITY/LEE'S SUMMIT RGNL (LXT)

RNP APCH - GPS.	MISSED APPROACH: Climb to 3100 direct ZONKI and hold.
▼ For uncompensated Baro-VNAV systems, LNAV/VNAV NA below -17°C or above 54°C. Rwy 11 helicopter visibility reduction below ¾ SM NA.	

ASOS 124.175	KANSAS CITY APP CON 118.4 307.35	CLNC DEL 118.45	UNICOM 122.8 (CTAF) 0
------------------------	--	---------------------------	---------------------------------



4 NM Holding Pattern					3100	ZONKI
CILKU					FMSU	EYAKA
4000 ← 291°					2600	1.8 NM to RW11
111° →					1600	1.1 NM to RW11
GP 3.00° TCH 45°						RW11
					8.7 NM	3.1 NM
CATEGORY	A	B	C	D		
LPV DA	1254-1 250 (300-1)					
LNAV/VNAV DA	1381-1¼ 377 (400-1¼)					
LNAV MDA	1380-1 376 (400-1)					
CIRCLING	1440-1 436 (500-1)	1540-1 536 (600-1)	1780-2¼ 776 (800-2¼)	1780-2½ 776 (800-2½)		

