

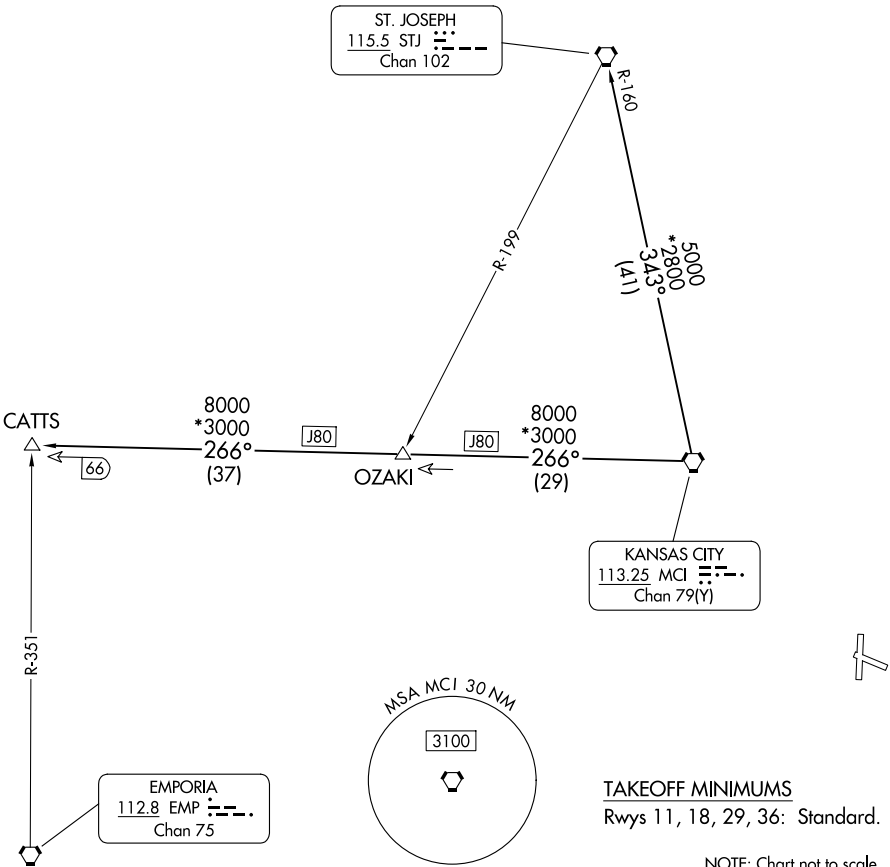
(CHIEF9.MCI) 25051
CHIEF NINE DEPARTURE

AL-6104 (FAA) KANSAS CITY/LEE'S SUMMIT RGNL (LXT)
LEE'S SUMMIT, MISSOURI

TOP ALTITUDE:
10000

RADAR required.

KANSAS CITY DEP CON
118.4 307.35
CLNC DEL
118.45



DEPARTURE ROUTE DESCRIPTION

TAKEOFF ALL RUNWAYS: Climb on assigned heading for RADAR vectors to appropriate route. Maintain 10000 or as assigned by ATC, expect filed altitude 10 minutes after departure.

CATTs TRANSITION (CHIEF9.CATTs): From over MCI VORTAC on MCI R-266 to CATTs.

ST. JOSEPH TRANSITION (CHIEF9.STJ): From over MCI VORTAC on MCI R-343 and STJ R-160 to STJ VORTAC.

CHIEF NINE DEPARTURE
(CHIEF9.MCI) 05OCT23

LEE'S SUMMIT, MISSOURI
KANSAS CITY/LEE'S SUMMIT RGNL (LXT)