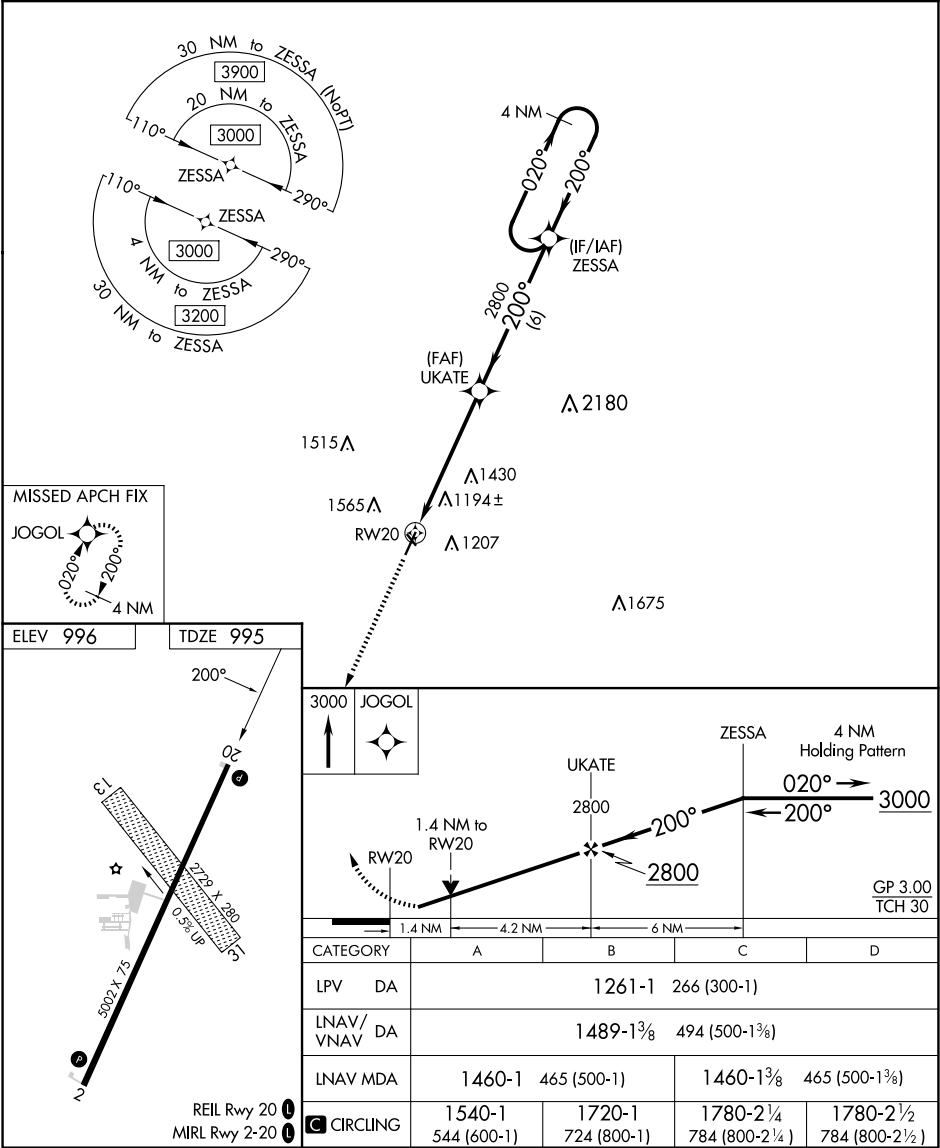


WAAS CH 90541 W20A	APP CRS 200°	Rwy Idg TDZE 995 Apt Elev 996	5002
--	------------------------	---	-------------

RNAV (GPS) RWY 20

SCHENCK FLD (ICL)

RNP APCH - GPS. ⚠ For uncompensated Baro-VNAV systems, LNAV/VNAV NA below -16°C (4°F) or above 54°C (130°F). Circling NA west of Rwy 2-20. Circling NA to Rwys 13 and 31. Rwy 20 helicopter visibility reduction below ¾ SM NA.		MISSED APPROACH: Climb to 3000 direct JOGOL and hold.
AWOS-3 132.025	MINNEAPOLIS CENTER 119.6 290.4	UNICOM 122.8 (CTAF) 0



NC-3, 10 JUL 2025 to 07 AUG 2025

NC-3, 10 JUL 2025 to 07 AUG 2025