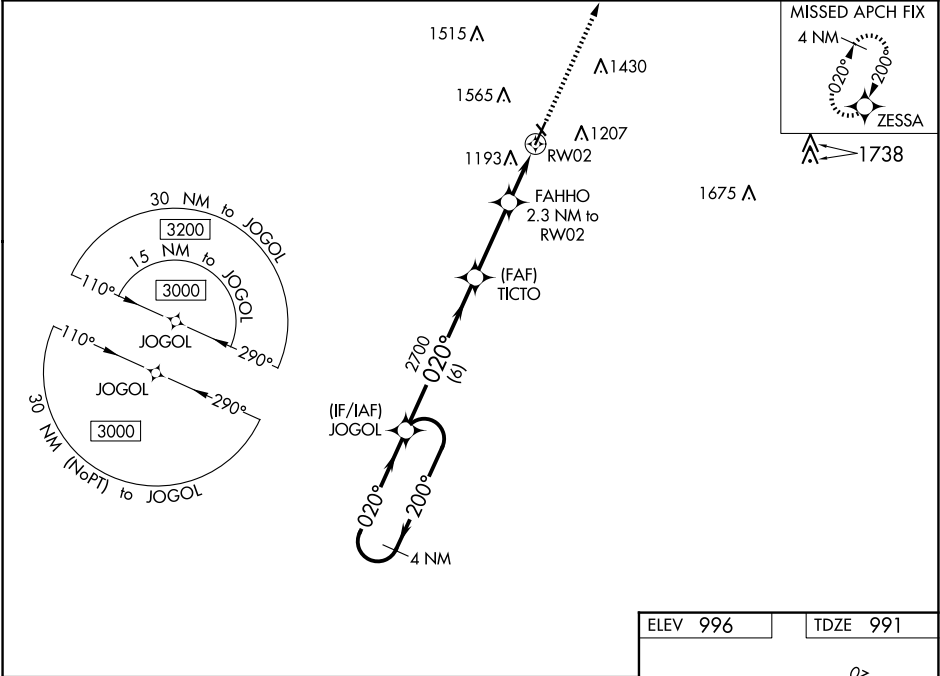


WAAS CH 99416 W02A	APP CRS 020°	Rwy Idg TDZE Apt Elev	5002 991 996
--	------------------------	-----------------------------	---

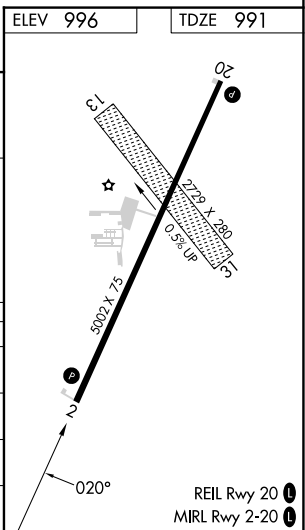
RNAV (GPS) RWY 2
SCHENCK FLD (ICL)

RNP APCH - GPS.	MISSED APPROACH: Climb to 3000 direct ZESSA and hold.
-----------------	---

AWOS-3 132.025	MINNEAPOLIS CENTER 119.6 290.4	UNICOM 122.8 (CTAF)
--------------------------	--	-------------------------------



4 NM Holding Pattern		VGSI and RNAV glidepath not coincident (VGSI Angle 3.00/TCH 28).		3000 ZESSA
3000 ← 200°		TICTO 2700		FAHHO 2.3 NM to RWY 2
GP 3.00°		1760		1.4 NM to RWY 2
TCH 40		RWY 2		
6 NM		2.9 NM		0.9 NM
1.4 NM				
CATEGORY	A	B	C	D
LPV DA	1241-1 250 (300-1)			
LNNAV/VNAV DA	1489-13/8 498 (500-13/8)			
LNNAV MDA	1460-1	469 (500-1)	1460-13/8	469 (500-13/8)
CIRCLING	1540-1 544 (600-1)	1720-1 724 (800-1)	1780-2 1/4 784 (800-2 1/4)	1780-2 1/2 784 (800-2 1/2)



NC-3, 10 JUL 2025 to 07 AUG 2025

NC-3, 10 JUL 2025 to 07 AUG 2025