

VORTAC STL	APP CRS	Rwy Idg	3800
117.4	208°	TDZE	437
Chan 121		Apt Elev	437

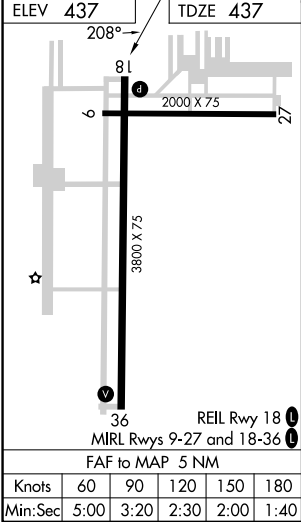
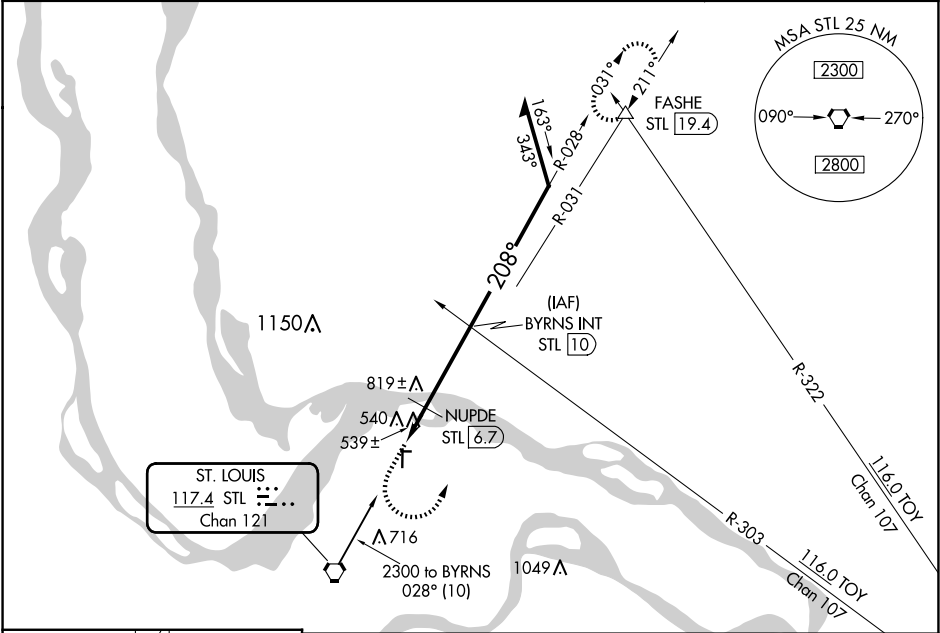
VOR RWY 18

ST CHARLES COUNTY RGNL/SMARTT FLD (SE/T)

When local altimeter setting not received, use St Louis Lambert Intl altimeter setting and increase all MDAs 60 feet and Circling visibility Cat C ¼ SM. NUPDE fix minimums: increase Circling visibility Cat C ¼ SM. Straight-in minimums NA with St Louis Lambert Intl altimeter setting.

MISSED APPROACH: Climb to 1000 then climbing left turn to 2700 via heading 360° and STL R-031 to FASHE INT/19.4 DME and hold.

ASOS 118.075	ST. LOUIS APP CON 124.2 353.9	CLNC DEL 121.6	UNICOM 122.7 (CTAF) 0
-----------------	----------------------------------	-------------------	--------------------------



1000 ↑	2700 hdg 360°	STL R-031	FASHE △				
VGSI and descent angles not coincident (VGSI Angle 3.00/TCH 40).				BYRNS INT STL 10			
				Remain within 10 NM			
STL 5				NUPDE STL 6.7			
≤3.77° TCH 43				2300			
1160*				*1220 when using St Louis Lambert Intl altimeter setting.			
1 NM				0.7 NM			
3.3 NM							
CATEGORY	A		B		C		D
S-18	1160-1		723 (800-1)		1160-2 723 (800-2)		NA
CIRCLING	1160-1		723 (800-1)		1220-2¼ 783 (800-2¼)		NA
NUPDE FIX MINIMUMS							
S-18	800-1 363 (400-1)					NA	
CIRCLING	840-1 403 (500-1)		900-1 463 (500-1)		1220-2¼ 783 (800-2¼)		NA

NC-3, 10 JUL 2025 to 07 AUG 2025

NC-3, 10 JUL 2025 to 07 AUG 2025