

APP CRS <b>180°</b>	Rwy Idg	<b>3800</b>
	TDZE	<b>437</b>
	Apt Elev	<b>437</b>

RNAV (GPS) RWY 18

ST CHARLES COUNTY RGNL/SMARTT FLD (S'E'T)

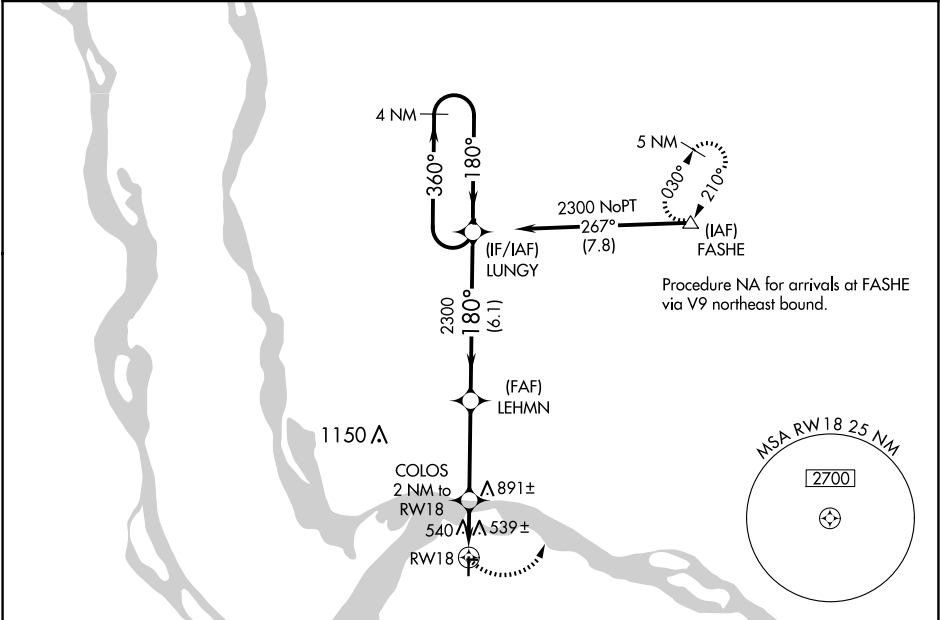
▼

⚠

DME/DME RNP-0.3 NA. When local altimeter setting not received, use St Louis Lambert Intl altimeter setting and increase all MDAs 60 feet; increase visibility Cat C ¼ SM. VDP NA with St Louis Lambert Intl altimeter setting.

MISSED APPROACH: Climbing left turn to 2700 direct FASHE and hold.

ASOS <b>118.075</b>	ST. LOUIS APP CON <b>124.2 353.9</b>	CLNC DEL <b>121.6</b>	UNICOM <b>122.7 (CTAF)</b>
------------------------	---	--------------------------	-------------------------------



ELEV 437

TDZE 437

2700 FASHE

△

VGSI and descent angles not coincident (VGSI Angle 3.00/TCH 40).

LEHMN LUNGY

4 NM Holding Pattern

360° 2300

180°

1260

1.1 NM to RW18

RW18

≤ 3.69° TCH 43

1.1 NM 0.9 NM 3.6 NM 6.1 NM

CATEGORY	A	B	C	D
LNNAV MDA	840-1	403 (500-1)	840-1¼ 403 (500-1¼)	NA
CIRCLING	840-1 403 (500-1)	900-1 463 (500-1)	1220-2¼ 783 (800-2¼)	NA

REIL Rwy 18

MIRL Rwy 9-27 and 18-36