

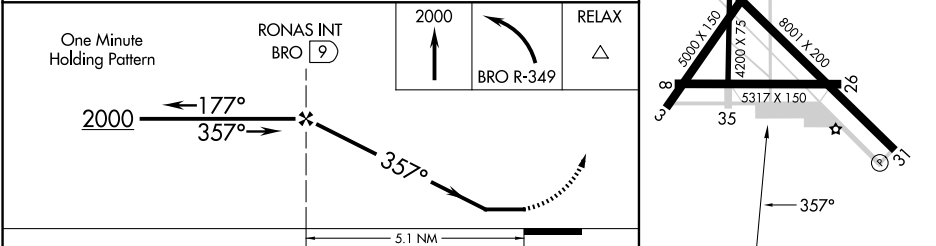
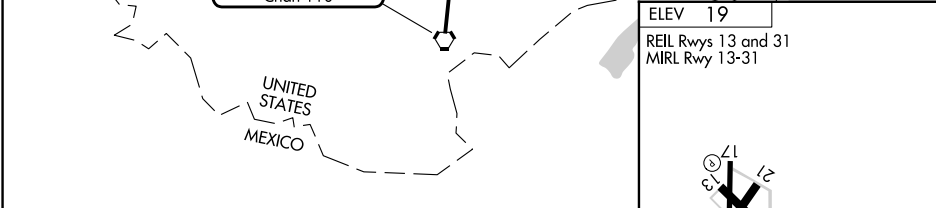
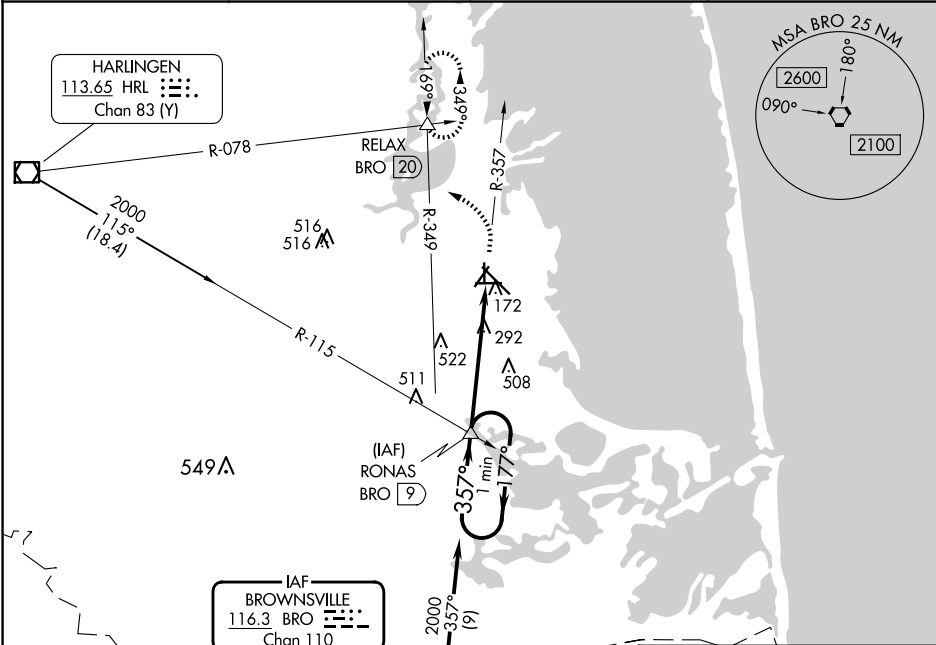
VORTAC BRO	APP CRS	Rwy Ldg	N/A
<b>116.3</b>	<b>357°</b>	TDZE	N/A
Chan <b>110</b>		Apt Elev	<b>19</b>


VOR-A

CAMERON COUNTY (PIL)

<div><div>▼</div><div>▲ NA</div></div> <div>When local altimeter setting not received, use Brownsville altimeter setting and increase all MDA 40 feet and increase Cat C visibility ¼ mile. Circling Rwy 3, 8, 17, 21, 26, 35 NA at night.</div>	MISSED APPROACH: Climb to 2000 then turn left via BRO R-349 to RELAX INT/BRO 20 DME and hold.
--	---

ASOS <b>118.525</b>	VALLEY APP CON <b>119.5 257.6</b>	CINC DEL <b>119.2</b>	UNICOM <b>122.8</b> (CTAF)
------------------------	--------------------------------------	--------------------------	-------------------------------



CATEGORY	A	B	C	D	FAF to MAP 5.1 NM					
 CIRCLING	780-1	761 (800-1)	840-2½ 821 (900-2½)	NA	Knots	60	90	120	150	180
					Min:Sec	5:06	3:24	2:33	2:02	1:42

SC-3, 10 JUL 2025 to 07 AUG 2025

SC-3, 10 JUL 2025 to 07 AUG 2025