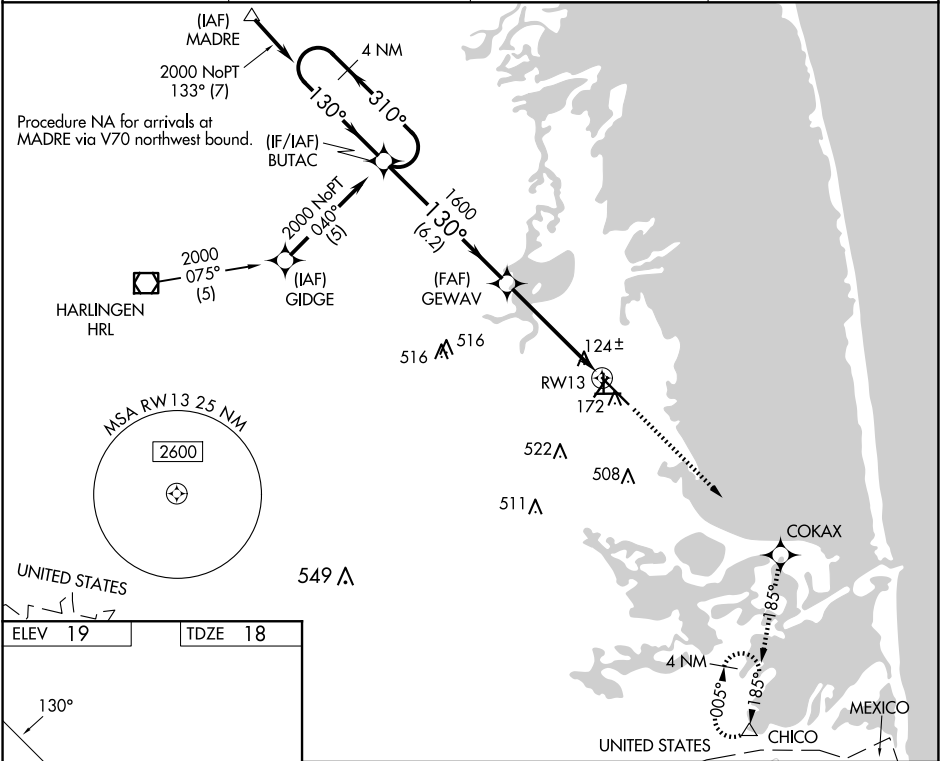


WAAS CH 53708 W13A	APP CRS 130°	Rwy Ldg 8001 TDZE 18 Apt Elev 19
--	------------------------	---

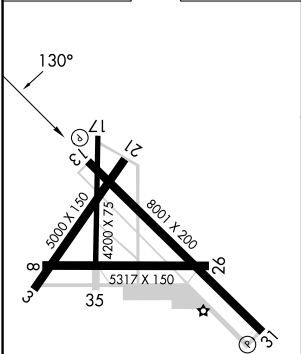
RNAV (GPS) RWY 13
CAMERON COUNTY (PIL)

RNP APCH. Baro-VNAV NA when using Brownsville altimeter setting. For uncompensated Baro-VNAV systems, LNAV/VNAV NA below -15°C or above 54°C. VDP NA when using Brownsville altimeter setting. When local altimeter setting not received, use Brownsville altimeter setting and increase all DA 38 feet and all MDA 40 feet, increase LPV all Cts, LNAV Cat C, and Circling Cat C visibility ¼ mile. Circling Rwy 3, 8, 17, 21, 26, 35 NA at night.	MISSED APPROACH: Climb to 3000 direct COKAX and via 185° track to CHICO and hold.
--	--

ASOS 118.525	VALLEY APP CON 119.5 257.6	CLNC DEL 119.2	UNICOM 122.8 (CTAF)
------------------------	--------------------------------------	--------------------------	-------------------------------



ELEV 19	TDZE 18
---------	---------



REIL Rwy 13 and 31 MRL Rwy 13-31

4 NM Holding Pattern		BUTAC		3000 ↑		COKAX ✱		tr 185°		CHICO △	
2000		← 310°		130° →		130°		GEWAV		*2.1 NM to RW13	
GP 3.00° TCH 40										*LNAV only.	
VGSI and RNAV glidepath not coincident (VGSI Angle 2.00° TCH 27°).											
		6.2 NM		2.7 NM		2.1 NM					
CATEGORY		A		B		C		D			
LPV DA		376-1¼		358 (400-1¼)				NA			
LNAV/ VNAV DA		424-1½		406 (500-1½)				NA			
LNAV MDA		480-1		462 (500-1)		480-1¼ 462 (500-1¼)		NA			
CIRCLING		540-1 521 (600-1)		620-1 601 (700-1)		840-2½ 821 (900-2½)		NA			

SC-3, 10 JUL 2025 to 07 AUG 2025

SC-3, 10 JUL 2025 to 07 AUG 2025