

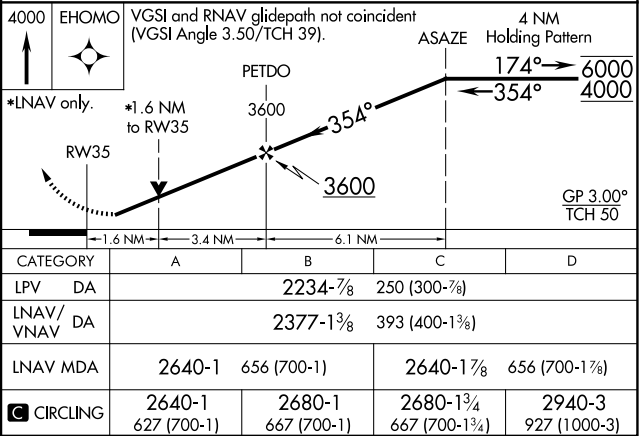
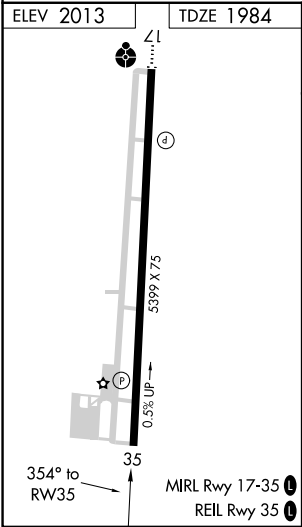
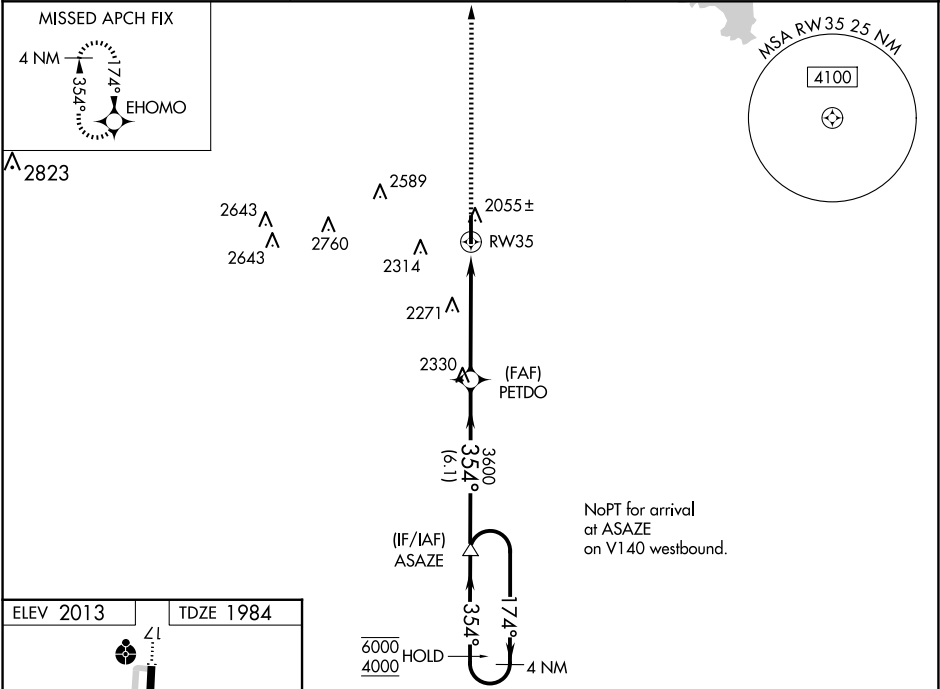
WAAS CH 53508 W35A	APP CRS 354°	Rwy Idg TDZE 1984 Apt Elev 2013
--	------------------------	---

RNAV (GPS) RWY 35

ELK CITY RGNL BUSINESS (ELK)

RNP APCH.	MISSED APPROACH: Climb to 4000 direct EHOMO and hold.
<div><div>▼</div><div>Rwy 35 helicopter visibility reduction below ¾ SM NA. For uncompensated Baro-VNAV systems, LNAV/VNAV NA below -18°C or above 54°C.</div></div>	

AWOS-3 118.225	FORT WORTH CENTER 128.4 269.37	UNICOM 122.8 (CTAF) 0
--------------------------	--	---------------------------------



SC-1, 10 JUL 2025 to 07 AUG 2025

SC-1, 10 JUL 2025 to 07 AUG 2025