

WAAS CH <b>82408</b> <b>W17A</b>	APP CRS <b>174°</b>	Rwy Idg TDZE <b>2013</b> Apt Elev <b>2013</b>
--	------------------------	---

RNAV (GPS) RWY 17

ELK CITY RGNL BUSINESS (ELK)

RNP APCH - GPS.

▼

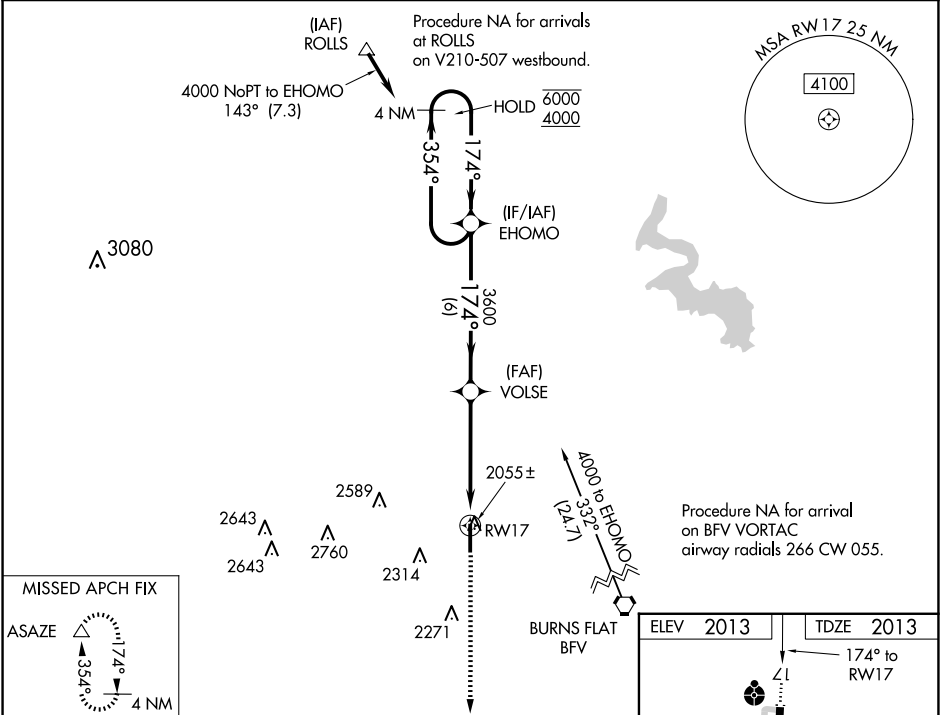
▲

For uncompensated Baro-VNAV systems, LNAV/VNAV NA below -18°C or above 54°C. Inop table does not apply to LPV all Cats and LNAV Cats C/D. For inop ALS increase LNAV/VNAV Cats A/B visibility to ½ SM.

ODALS  
⬮

MISSED APPROACH: Climb to 4000 direct ASAZE and hold.

AWOS-3 <b>118.225</b>	FORT WORTH CENTER <b>128.4 269.37</b>	UNICOM <b>122.8 (CTAF) 0</b>
--------------------------	--	---------------------------------



4 NM Holding Pattern		EHOMO		VOLSE		4000		ASAZE	
6000 ← 354°		4000 → 174°		174°		1.4 NM to RW17		RW17	
GP 3.00° TCH 52		3600		3.4 NM		1.4 NM			
CATEGORY		A		B		C		D	
LPV DA		2263-¾		250 (300-¾)					
LNAV/ VNAV DA		2305-¾		292 (300-¾)					
LNAV MDA		2520-¾ 507 (600-¾)		2520-1⅜ 507 (600-1⅜)					
CIRCLING		2520-1 507 (600-1)		2680-1 667 (700-1)		2680-1⅜ 667 (700-1⅜)		2940-3 927 (1000-3)	

ELEV 2013

TDZE 2013

174° to RWY 17

ASAZE

3599 x 75

0.5% UP

35

MIRL Rwy 17-35

REIL Rwy 35