

WAAS CH <b>87009</b> <b>W34A</b>	APP CRS <b>343°</b>	Rwy Idg TDZE Apt Elev	<b>4301</b> <b>1801</b> <b>1803</b>
--	------------------------	-----------------------------	---

RNAV (GPS) RWY 34

AURORA MUNI/AL POTTER FLD (AUH)

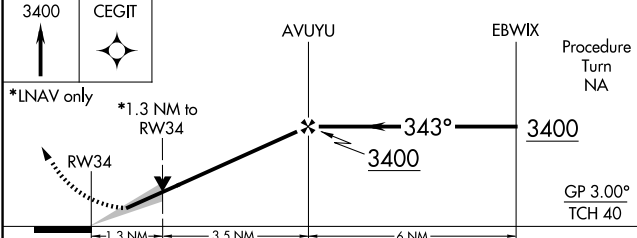
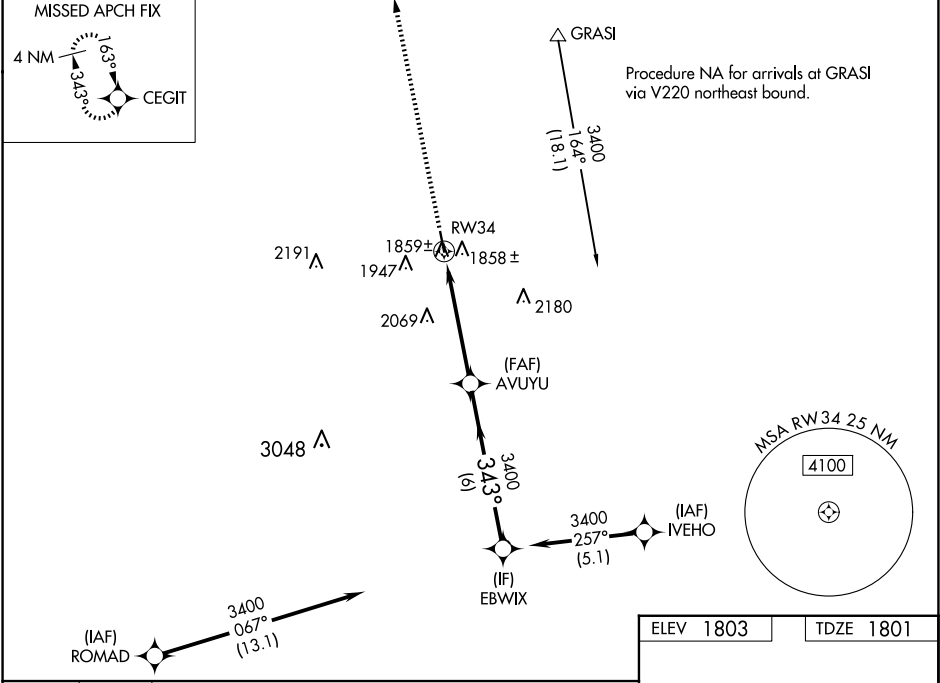
▼

▲

Baro-VNAV NA when using Grand Island altimeter setting. For uncompensated Baro-VNAV systems, LNAV/VNAV NA below -18°C (0°F) or above 54°C (130°F). DME/DME RNP-0.3 NA. When local altimeter setting not received, use Grand Island altimeter setting and increase all DA 41 feet and all MDA 60 feet. VDP NA when using Grand Island altimeter setting.

MISSED APPROACH:  
Climb to 3400 direct CEGIT and hold.

AWOS-3 <b>121.225</b>	MINNEAPOLIS CENTER <b>119.4 278.8</b>	UNICOM <b>122.8 (CTAF) 0</b>
--------------------------	--	---------------------------------



CATEGORY	A	B	C	D
LPV DA	2051-1	250 (300-1)		NA
LNAV/VNAV DA	2129-1¼	328 (400-1¼)		NA
LNAV MDA	2260-1	459 (500-1)		NA
CIRCLING	2300-1 497 (500-1)	2340-1 537 (600-1)		NA

