

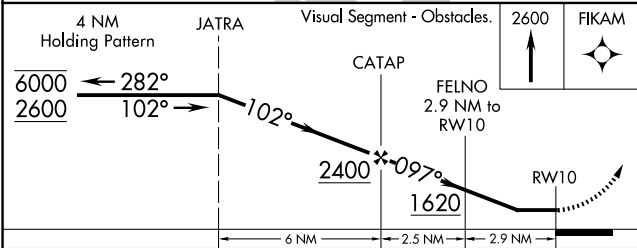
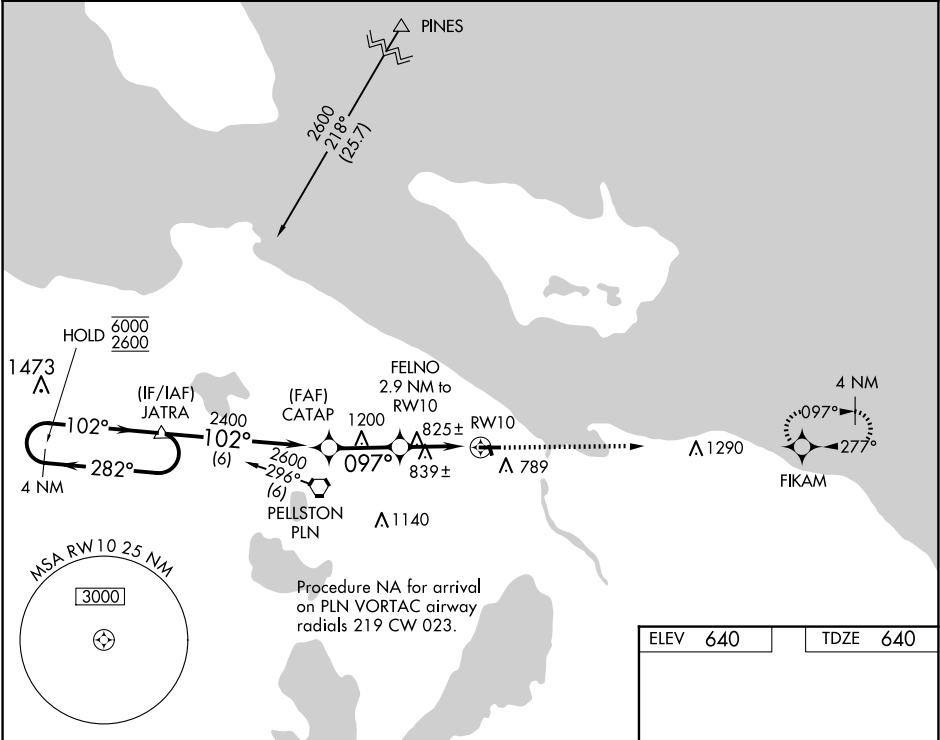
WAAS CH 50224 W10A	APP CRS 097°	Rwy Idg TDZE Apt Elev	4004 640 640
--	------------------------	-----------------------------	---


RNAV (GPS) RWY 10

CHEBOYGAN COUNTY (SLH)

RNP APCH - GPS.	MISSED APPROACH: Climb to 2600 direct FIKAM and hold.
<div><div>▼</div><div>▲</div></div> Rwy 10 helicopter visibility reduction below 1 SM NA. Procedure NA at night.	

AWOS-3 118.175	MINNEAPOLIS CENTER 134.6 354.05	UNICOM 122.8 (CTAF)	122.5 
--------------------------	---	-------------------------------	--



ELEV 640	TDZE 640
REIL Rwy 10 and 28  MIRL Rwy 10-28 and 17-35 