

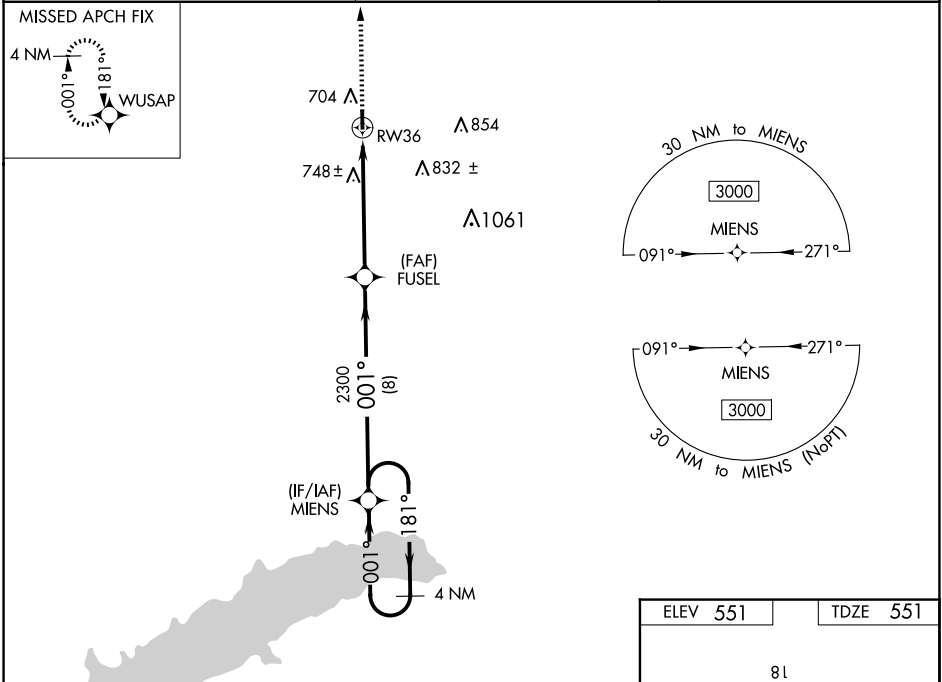
RNP APCH-GPS.

Baro-VNAV NA. Helicopter visibility reduction below ¾ SM NA.

Use Olive Branch altimeter setting; when not received, use Oxford altimeter setting and increase LPV DA to 873, LNAV/VNAV DA to 883 and all MDA 20 feet; increase LPV all Cats and LNAV Cat C visibility ⅛ mile.

MISSED APPROACH: Climb to 3000 direct WUSAP and hold.

OLV AWOS-3 119.925	MEMPHIS APP CON 125.8 338.3	UNICOM 122.8 (CTAF)
------------------------------	---------------------------------------	-------------------------------



4 NM Holding Pattern

VGSI and RNAV glidepath not coincident (VGSI Angle 3.25/TCH 65).

3000

WUSAP

MIENS

FUSEL

RW36

GP 3.00° TCH 40

8 NM

5.4 NM

CATEGORY	A	B	C	D
LPV DA	861-1	310 (400-1)		NA
LNAV/VNAV DA	871-1 ⅛	320 (400-1 ⅛)		NA
LNAV MDA	1060-1	509 (600-1)	1060-1 ⅜ 509 (600-1 ⅜)	NA
CIRCLING	1080-1 529 (600-1)	1100-1 549 (600-1)	1260-2 709 (800-2)	NA

81

3202 X 60

36

001° to RW36

MIRL Rwy 18-36