

VOR/DME MCW
114.9
Chan **96**

APP CRS
297°

Rwy Idg
TDZE
Apt Elev **1229**

N/A
N/A
1229

VOR-A

FOREST CITY MUNI/TRIMBLE FLD (FXY)

DME required.

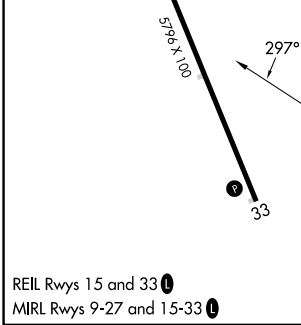
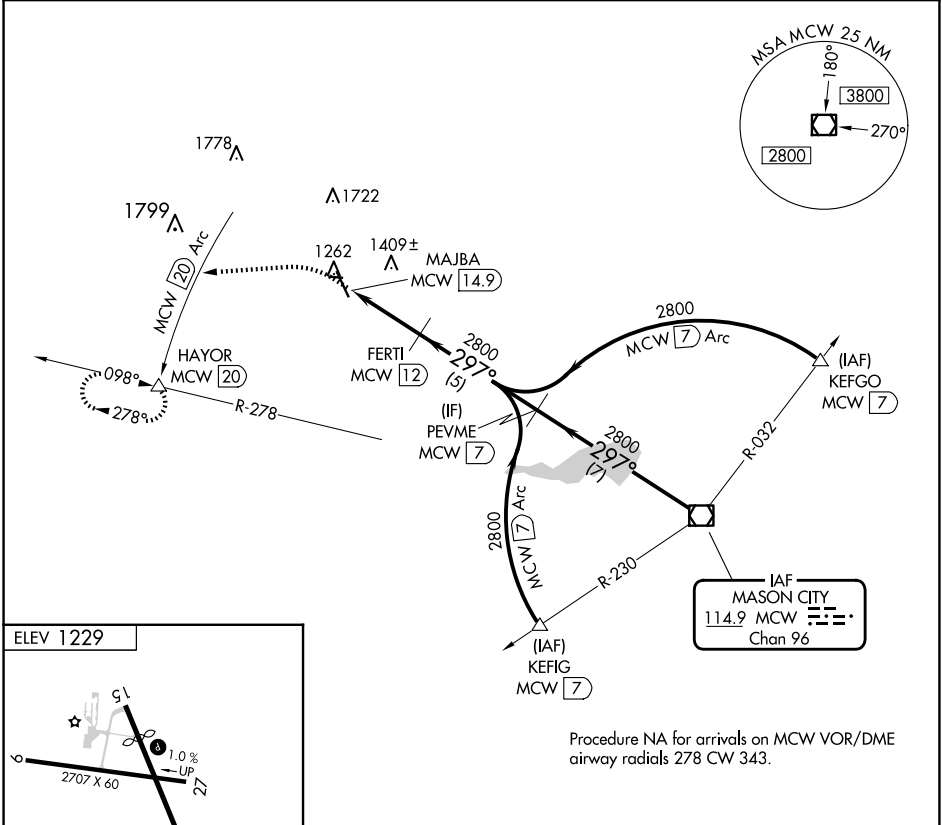
▼

⚠

When local altimeter setting not received use Mason City altimeter setting and increase all MDA 40 feet. Circling to Rwy 9, 27 33 NA at night.

MISSED APPROACH: Climb to 3000 on heading 260° to MCW 20 DME Arc and on MCW 20 DME Arc counterclockwise to HAYOR/20 DME and hold.

AWOS-3 123.925	MINNEAPOLIS CENTER 127.3 257.675	UNICOM 122.8 (CTAF) 0
--------------------------	--	---------------------------------



REIL Rwys 15 and 33				
MIRL Rwys 9-27 and 15-33				
FOREST CITY, IOWA	FOREST CITY MUNI/TRIMBLE FLD (FXY)			
Amdt 3C 07OCT21	43°14'N-93°37'W			
	VOR-A			