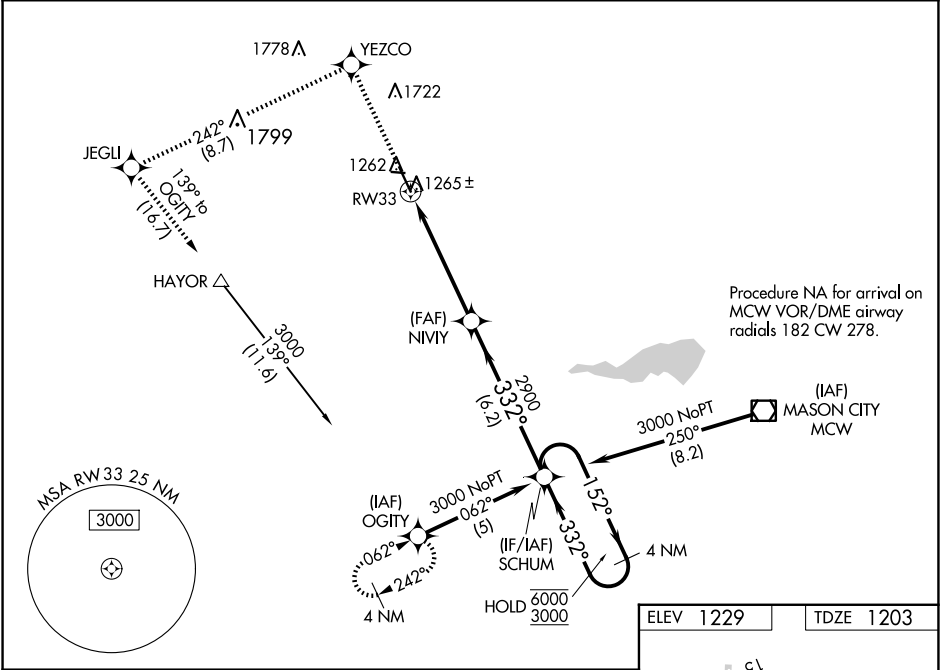


WAAS CH <b>78016</b> <b>W33A</b>	APP CRS <b>332°</b>	Rwy Idg <b>5796</b> TDZE <b>1203</b> Apt Elev <b>1229</b>
--	------------------------	---

RNAV (GPS) RWY 33  
FOREST CITY MUNI/TRIMBLE FLD (FXY)

RNP APCH - GPS.	MISSED APPROACH: Climb to 3000 direct YEZCO and left turn on track 242° to JEGLI and left turn on track 139° to OGITY and hold.
-----------------	---

AWOS-3 <b>123.925</b>	MINNEAPOLIS CENTER <b>127.3 257.675</b>	UNICOM <b>122.8 (CTAF) 0</b>
--------------------------	--	---------------------------------



3000	YEZCO	JEGLI	OGITY	SCHUM
↑	✧	✧	✧	
	tr 242°	tr 139°		
NIVY				
RW33		4 NM Holding Pattern		
332°		152° → 6000		
2900		← 332° 3000		
5.1 NM		6.2 NM		
CATEGORY	A	B	C	D
LPV DA	1453-1 250 (300-1)			
RNAV/ VNAV DA	1535-1¼ 332 (400-1¼)			
RNAV MDA	1520-1 317 (300-1)			
CIRCLING	1660-1 431 (500-1)	1760-1 531 (600-1)	2040-2½ 811 (900-2½)	2040-2¾ 811 (900-2¾)

