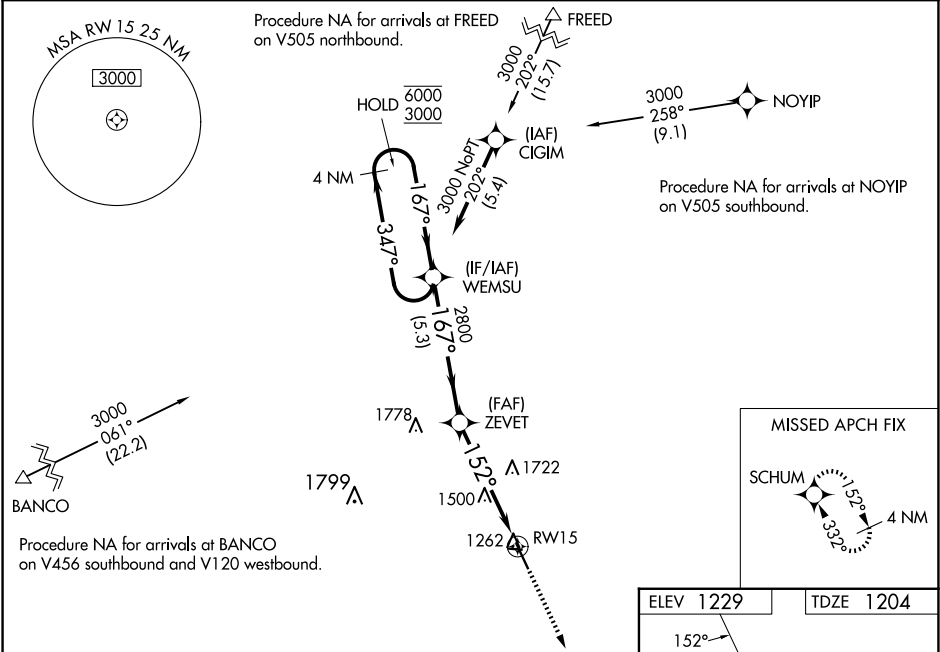


WAAS CH 90428 W15A	APP CRS 152°	Rwy Idg 5196 TDZE 1204 Apt Elev 1229
--	------------------------	---

RNAV (GPS) RWY 15

FOREST CITY MUNI/TRIMBLE FLD (FXY)

RNP APCH.		MISSED APPROACH: Climb to 3000 direct to SCHUM and hold.
<div><div><div></div><div></div></div><div>Circling to Rwy 9, 27 and 33 NA at night. For uncompensated Baro-VNAV systems, LNAV/VNAV NA below -29°C or above 54°C. When local altimeter setting not received, use Mason City altimeter setting and increase LPV DA to 1488 feet; LNAV/VNAV DA to 1516 feet; increase all MDA 40 feet. VDP and Baro-VNAV NA when using Mason City altimeter setting.</div></div>		
AWOS-3 123.925	MINNEAPOLIS CENTER 127.3 257.675	UNICOM 122.8 (CTAF) 0



4 NM

Holding Pattern

WEMSU

VGSI and RNAV glidepath not coincident

(VGSI Angle 3.00/TCH 28).

3000

↑

SCHUM

✱

6000

← 347°

3000

167° →

GP 3.00°

TCH 40

2800

✱

2800

✱

1.7 NM to RW15

✱

RW15

✱

5.3 NM

3.2 NM

1.7 NM

CATEGORY

A

B

C

D

LPV DA

1454-1

250 (300-1)

LNAV/VNAV DA

1482-1

278 (300-1)

LNAV MDA

1760-1

556 (600-1)

1760-1½

556 (600-1½)

CIRCLING

1760-1

531 (600-1)

2040-2½

811 (900-2½)

2040-2¾

811 (900-2¾)

4 NM

Holding Pattern

WEMSU

VGSI and RNAV glidepath not coincident

(VGSI Angle 3.00/TCH 28).

3000

↑

SCHUM

✱

6000

← 347°

3000

167° →

GP 3.00°

TCH 40

2800

✱

2800

✱

1.7 NM to RW15

✱

RW15

✱

5.3 NM

3.2 NM

1.7 NM

CATEGORY

A

B

C

D

LPV DA

1454-1

250 (300-1)

LNAV/VNAV DA

1482-1

278 (300-1)

LNAV MDA

1760-1

556 (600-1)

1760-1½

556 (600-1½)

CIRCLING

1760-1

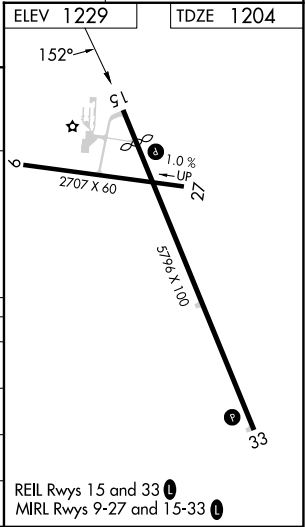
531 (600-1)

2040-2½

811 (900-2½)

2040-2¾

811 (900-2¾)



NC-3, 10 JUL 2025 to 07 AUG 2025

NC-3, 10 JUL 2025 to 07 AUG 2025