


WAAS CH 81824 W01A	APP CRS 011°	Rwy Idg TDZE 253 Apt Elev 265	6008
--	------------------------	---	-------------

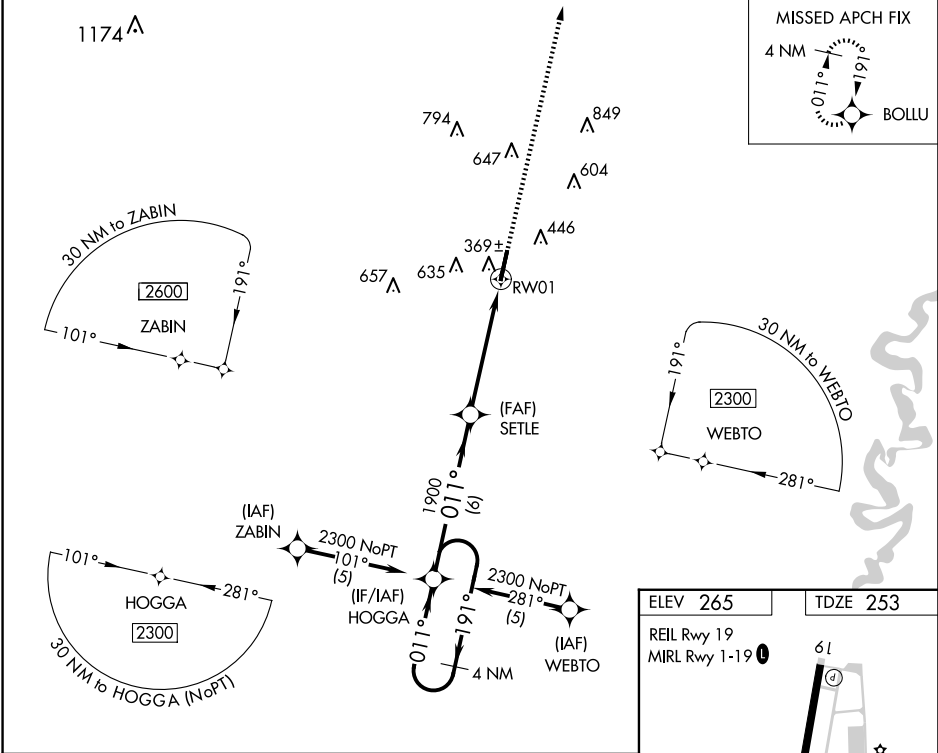
RNAV (GPS) RWY 1
SEARCY RGNL (SRC)

⚠ Circling NA for Cats B and C west of Rwy 1-19. DME/DME RNP-0.3 NA. VDP NA with Bill and Hillary Clinton Ntl/Adams Fld altimeter setting. When local altimeter setting not received, use Bill and Hillary Clinton Ntl/Adams Fld altimeter setting: increase LPV DA to 662 feet and all Cats visibility ¼ SM; increase all MDAs 100 feet and LNAV and Circling Cat C visibility ¼ SM. For inop ALS, increase LPV visibility to ¾ SM. For inop ALS, when using Bill and Hillary Clinton Ntl/Adams Fld altimeter setting, increase LPV all Cats visibility to 1½ SM.

MALSR


MISSED APPROACH:
Climb to 2900 direct BOLLU and hold.

AWOS-3PT 128.325	LITTLE ROCK APP CON 119.75 291.775	CLNC DEL 119.75	UNICOM 122.7 (CTAF) 0
----------------------------	--	---------------------------	--



4 NM Holding Pattern HOGGA

GP 3.00° TCH 54

2300 191° 011°

011°

1900

6 NM

4 NM

1 NM

VGSI and RNAV glidepath not coincident (VGSI Angle 3.00/TCH 57).

2900 BOLLU

*1 NM to RW01

*LNAV only.

CATEGORY	A	B	C	D
LPV DA	573-½	320 (400-½)		NA
LNAV MDA	620-½ 367 (400-½)	620-⅝ 367 (400-⅝)		NA
CIRCLING	760-1 495 (500-1)	780-1½ 515 (600-1½)		NA

ELEV 265 TDZE 253

REIL Rwy 19 MIRL Rwy 1-19 **0**

61

4

6008 X 100

0.5% UP

AS

011°

SC-1, 10 JUL 2025 to 07 AUG 2025

SC-1, 10 JUL 2025 to 07 AUG 2025