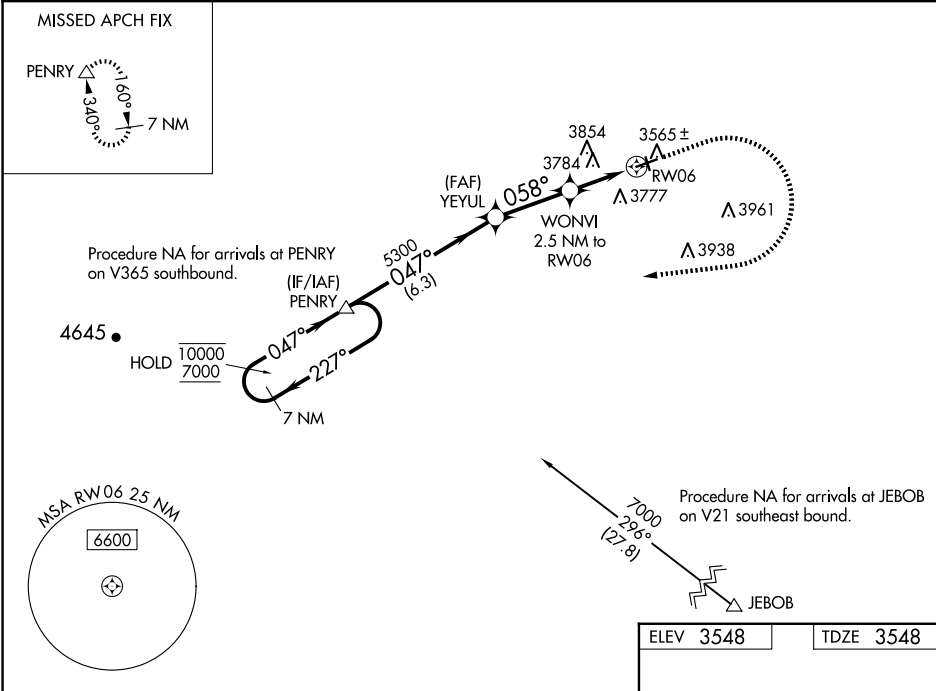


WAAS CH 58342 W06A	APP CRS 058°	Rwy Idg TDZE Apt Elev	4602 3548 3548
--	------------------------	-----------------------------	---

RNAV (GPS) RWY 6

CONRAD (S01)

RNP APCH.		MISSED APPROACH: Climb to 4500, then climbing right turn to 7000 direct PENRY and hold, continue climb in hold to 7000.
CTB ASOS 119.025		AUNICOM 122.8 (CTAF) 0
SALT LAKE CITY CENTER 133.4 285.4		



7 NM Holding Pattern		PENRY	YEYUL	4500	7000	PENRY
10000 ← 227°		047° →	047°	5300	WONVI 2.5 NM to RW06	* LNAV only.
GP 3.00° TCH 45		5300	058°	*4400	RW06	
		6.3 NM	2.8 NM	2.5 NM		
CATEGORY	A	B	C	D		
LPV DA	3915-1		367 (400-1)			
LNAV/ VNAV DA	4266-2		718 (800-2)			
LNAV MDA	4220-1	672 (700-1)	4220-1 7/8	672 (700-1 7/8)		
CIRCLING	4220-1 672 (700-1)	4340-1 792 (800-1)	4460-2 3/4 912 (1000-2 3/4)	4620-3 1072 (1100-3)		

ELEV 3548

TDZE 3548

MIRL Rwy 6-24 0

REIL Rwy 24 0