

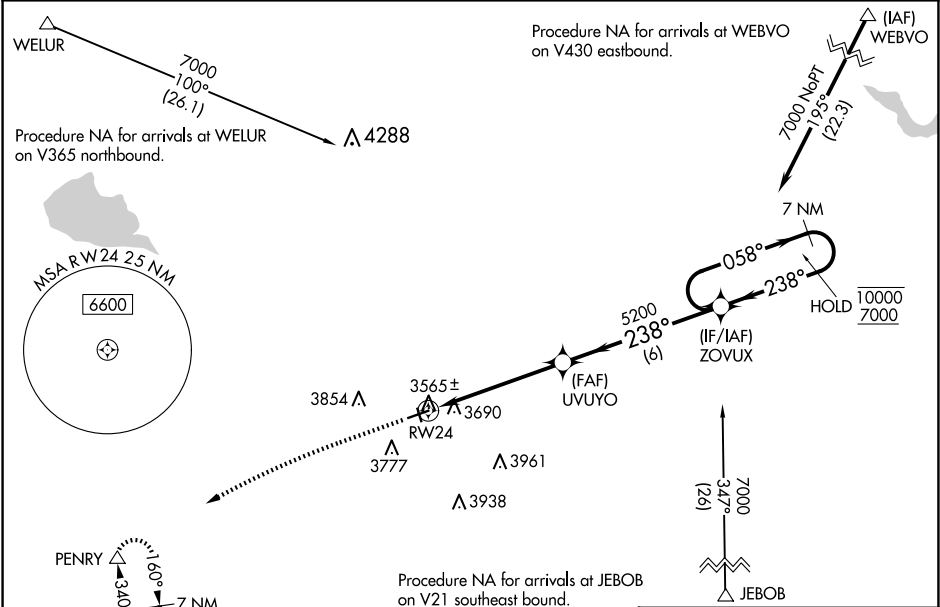
WAAS CH 69642 W24A	APP CRS 238°	Rwy Idg TDZE 3538 Apt Elev 3548
--	------------------------	---

RNAV (GPS) RWY 24

CONRAD (S01)

RNP APCH.	MISSED APPROACH: Climb to 4120 then climbing left turn to 7000 direct PENRY and hold, continue climb-in-hold to 7000.
NA	Circling NA to Rwy 15 and 33. Rwy 24 helicopter visibility reduction below ¾ SM NA. Baro-VNAV NA. Use Cut Bank altimeter setting.

CTB ASOS 119.025	SALT LAKE CITY CENTER 133.4 285.4	AUNICOM 122.8 (CTAF) 0
----------------------------	---	----------------------------------



ELEV 3548		TDZE 3538	
4120	7000	PENRY	VGSI and RNAV glidepath not coincident (VGSI Angle 3.00/TCH 27).
ZOVUX		7 NM Holding Pattern	
UVUYO		058° → 10000 ← 238° 7000	
RW24		GP 3.00° TCH 45	
5.1 NM		6 NM	
CATEGORY	A	B	C
LPV DA	3905-1		367 (400-1)
LNAV/VNAV DA	4018-1 3/8		480 (500-1 3/8)
LNAV MDA	4120-1	582 (600-1)	4120-1 3/4 582 (600-1 3/4)
CIRCLING	4140-1 592 (600-1)	4340-1 792 (800-1)	4460-2 3/4 912 (1000-2 3/4) 4620-3 1072 (1100-3)