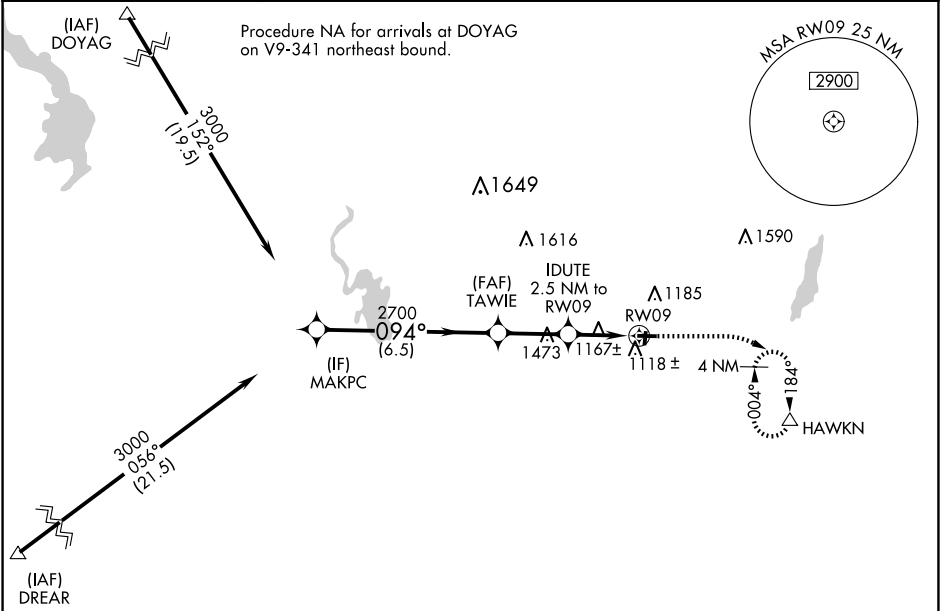


WAAS CH 42743 W09A	APP CRS 094°	Rwy Idg TDZE Apt Elev	3401 1068 1070
--	------------------------	-----------------------------	---

RNAV (GPS) RWY 9
HARTFORD MUNI (HXF')

RNP APCH.	MISSED APPROACH: Climb to 1700 then climbing right turn to 3000 direct HAWKN and hold, continue climb-in-hold to 3000.
NA Circling NA to Rwys 18 and 36. Baro-VNAV NA. Use Westbend altimeter setting.	

ETB AWOS-3 120.0	MILWAUKEE APP CON 125.35 307.0	UNICOM 123.0 (CTAF) 0
----------------------------	--	---------------------------------



		ELEV 1070		TDZE 1068	
		1700		3000 HAWKN	
		MAKPC		TAWIE	
		3000		2700	
		GP 3.00° TCH 40		IDUTE 2.5 NM to RW09	
		094°		RW09	
		2700		*1900	
		6.5 NM		2.5 NM	
		2.5 NM		2.5 NM	
CATEGORY	A	B	C	D	
LPV DA	1372-7/8	304 (400-7/8)	NA		
RNAV/VNAV DA	1372-7/8	304 (400-7/8)	NA		
RNAV MDA	1480-1	412 (500-1)	NA		
CIRCLING	1560-1	490 (500-1)	NA		

MIRL Rwy 9-27 0

REIL Rws 9 and 27 0

EC-3, 10 JUL 2025 to 07 AUG 2025

EC-3, 10 JUL 2025 to 07 AUG 2025