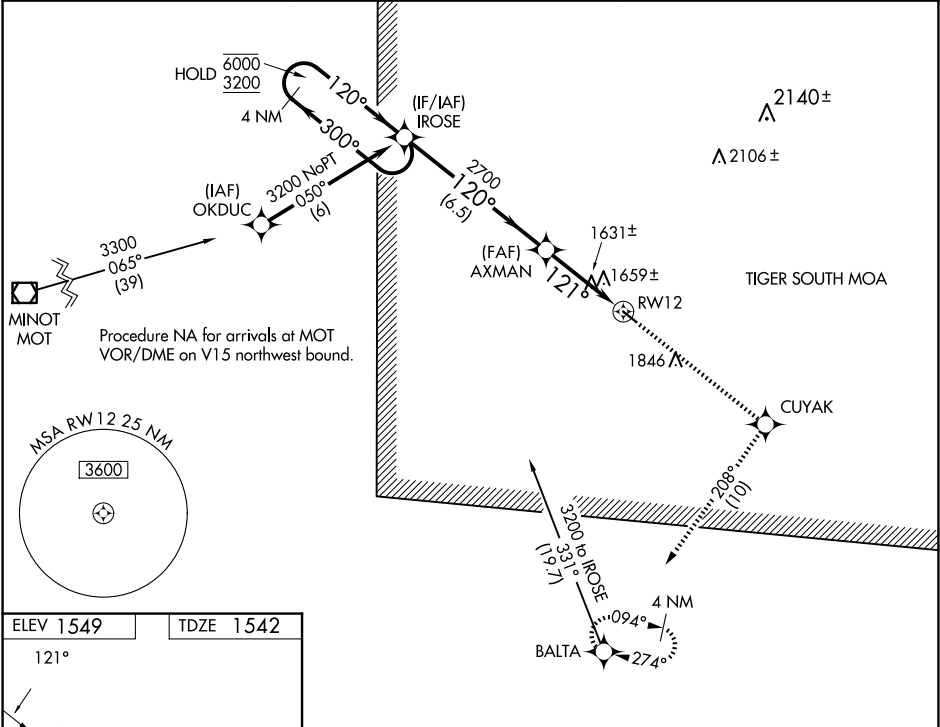


WAAS CH 58124 W12A	APP CRS 121°	Rwy Idg TDZE Apt Elev	3600 1542 1549
--	------------------------	-----------------------------	---

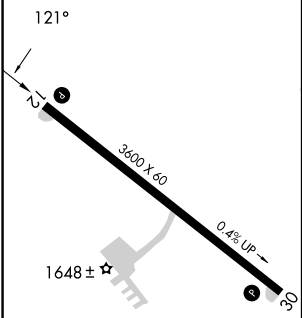
RNAV (GPS) RWY 12
RUGBY MUNI (RUG)

RNP APCH. ▼	MISSED APPROACH: Climb to 3600 direct CUYAK and on track 208° to BALTA and hold.
----------------	--

AWOS-3 118.475	MINNEAPOLIS CENTER 127.6 279.6	UNICOM 122.8 (CTAF) 0
--------------------------	--	---------------------------------



ELEV 1549	TDZE 1542
-----------	-----------



Visual Segment - Obstacles.			
4 NM Holding Pattern	IROSE	3600	CUYAK
6000 ← 300°	120° →	AXMAN	tr 208°
3200	120°	2700	121°
6.5 NM		2.4 NM	1.1
CATEGORY	A	B	C
LP MDA	1900-1	358 (400-1)	NA
LNAV MDA	1920-1	378 (400-1)	NA
CIRCLING	2080-1 531 (600-1)	2160-1 611 (700-1)	2160-1¾ 611 (700-1¾)

REIL Rwy 12 and 30 0
MIRL Rwy 12-30 0

NC-1, 10 JUL 2025 to 07 AUG 2025

NC-1, 10 JUL 2025 to 07 AUG 2025