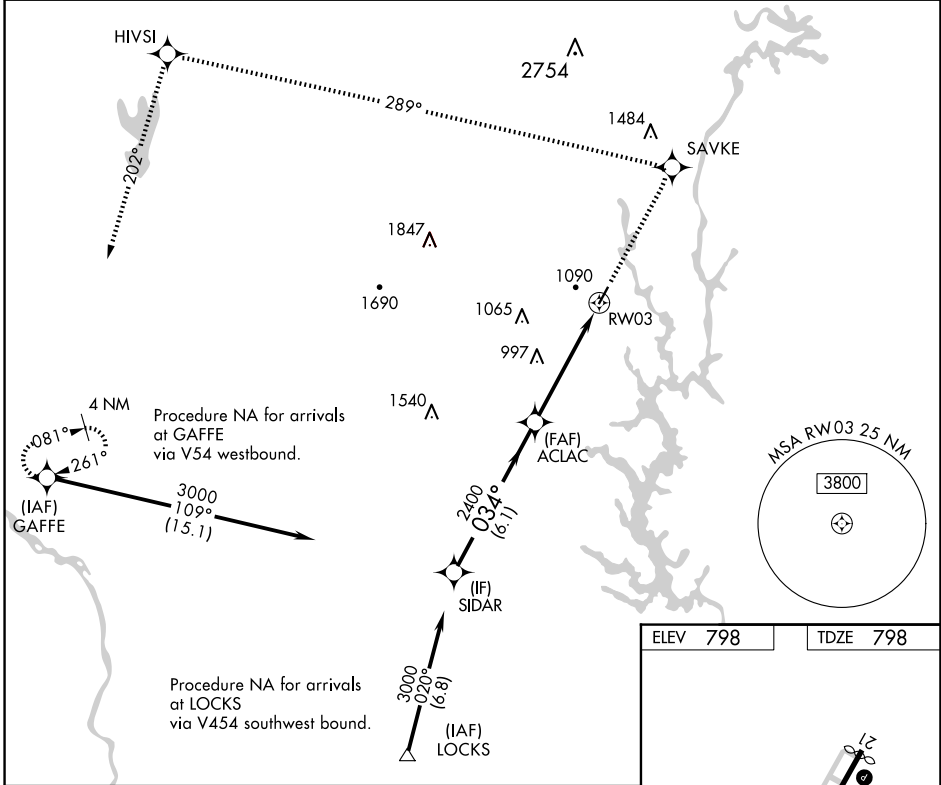


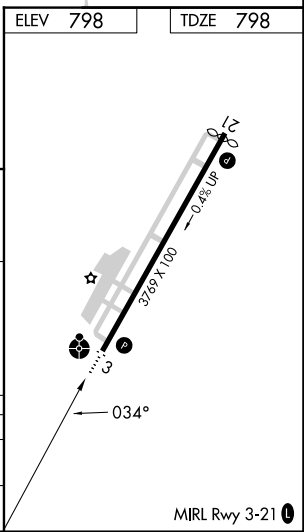
WAAS CH 90302 W03A	APP CRS 034°	Rwy Idg TDZE Apt Elev	3769 798 798
--	------------------------	-----------------------------	---

RNAV (GPS) RWY 3
GASTONIA MUNI (AKH)

RNP APCH. ▼ If local altimeter setting not received, use Charlotte Douglas Intl altimeter setting and increase all DAs/MDAs 40 feet. Inoperative table does not apply.		ODALS ● ⋮	MISSED APPROACH: Climb to 3200 direct SAVKE and via 289° track to HIVSI and 202° track to GAFFE and hold.
ASOS 135.725	CHARLOTTE APP CON 120.05 257.2	CLNC DEL 127.2	UNICOM 123.0 (CTAF) 0



VGSI and RNAV glidepath not coincident (VGSI Angle 3.00/TCH 29).				3200	SAVKE	tr 289°	HIVSI	tr 202°	GAFFE
Procedure Turn NA				3000	SIDAR	034°	ACLAC		RW03
GP 3.00° TCH 40				2400					
				6.1 NM		4.8 NM			
CATEGORY	A	B	C	D					
LPV DA	1118-1¼		320 (400-1¼)		NA				
LNAV MDA	1440-1		642 (700-1)		1440-1¾		642 (700-1¾)		NA



SE-2, 10 JUL 2025 to 07 AUG 2025

SE-2, 10 JUL 2025 to 07 AUG 2025