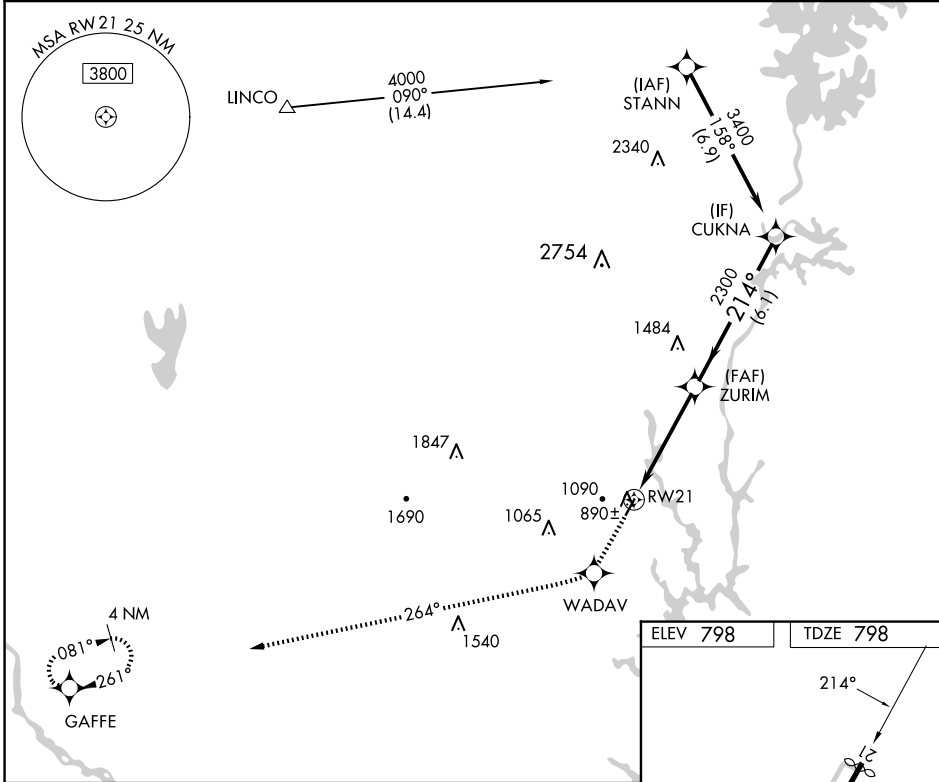


WAAS CH 50402 W21A	APP CRS 214°	Rwy Idg TDZE Apt Elev	3688 798 798
--	------------------------	-----------------------------	---

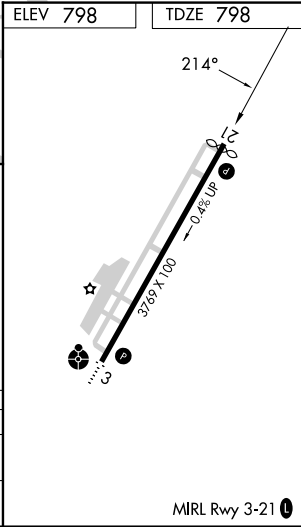
RNAV (GPS) RWY 21
GASTONIA MUNI (AKH)

RNP APCH. If local altimeter setting not received, use Charlotte/Douglas Intl altimeter setting and increase all DA/MDAs 40 feet. Rwy 21 helicopter visibility reduction below ¾ SM NA.		MISSED APPROACH: Climb to 3200 direct WADAV and via 264° track to GAFFE and hold.
---	--	---

ASOS 135.725	CHARLOTTE APP CON 120.05 257.2	CLNC DEL 127.2	UNICOM 123.0 (CTAF) 0
------------------------	--	--------------------------	---------------------------------



3200	WADAV	GAFFE	VGSI and RNAV glidepath not coincident (VGSI Angle 3.00/TCH 41).	
↑	✧	tr 264° ✧		
RW21		ZURIM	CUKNA	3400
		214°	2300	Procedure Turn NA
		4.6 NM	6.1 NM	GP 3.00° TCH 40
CATEGORY	A	B	C	D
LPV DA	1111-1¼	313 (400-1¼)		NA
LNAV MDA	1420-1	622 (700-1)	1420-1¾ 622 (700-1¾)	NA



SE-2, 10 JUL 2025 to 07 AUG 2025

SE-2, 10 JUL 2025 to 07 AUG 2025