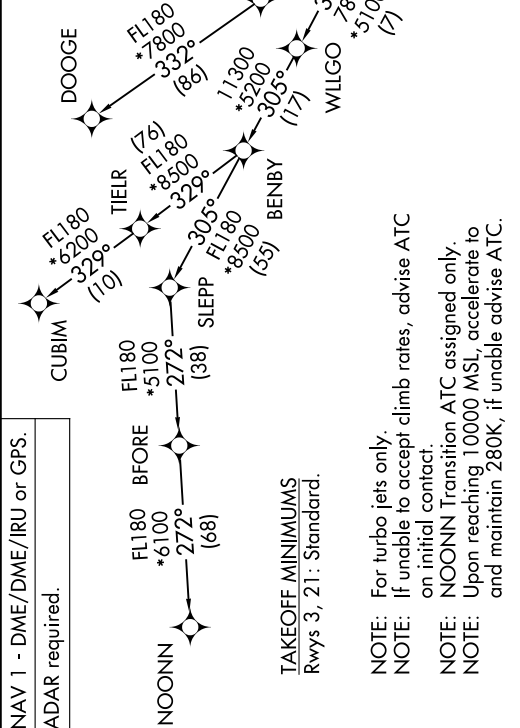


SE-2, 10 JUL 2025 to 07 AUG 2025

RNAV 1 - DME/DME/IRU or GPS.
RADAR required.

TOP ALTITUDE: 3000
-----------------------

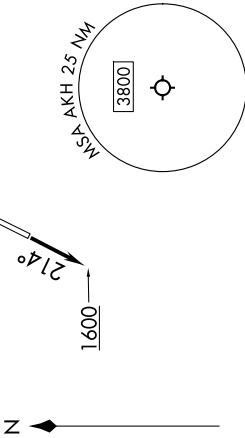
CHARLOTTE DEP CON  
120.05 257.2  
ASOS  
135.725  
CLNC DEL  
127.2  
UNICOM (CTAF)  
123.0



NOTE: For turbo jets only.  
NOTE: If unable to accept climb rates, advise ATC on initial contact.  
NOTE: NOONN Transition ATC assigned only.  
NOTE: Upon reaching 10000 MSL, accelerate to and maintain 280K, if unable advise ATC.

DEPARTURE ROUTE DESCRIPTION

TAKEOFF RUNWAY 3: Climb on heading 049° to 2700 before turning left, then on heading assigned by ATC, thence. . . .  
TAKEOFF RUNWAY 21: Climb on heading 214° to 1600 before proceeding north, then on heading assigned by ATC, thence. . . .  
... on RADAR vectors to WAYDS, then on depicted route to JOJJO. Then on assigned transition. Maintain 3000, expect filed altitude within 10 minutes after departure.  
CUBIM TRANSITION (JOJJO5.CUBIM)  
DOOGE TRANSITION (JOJJO5.DOOGE)  
NOONN TRANSITION (JOJJO5.NOONN)



NOTE: Chart not to scale.