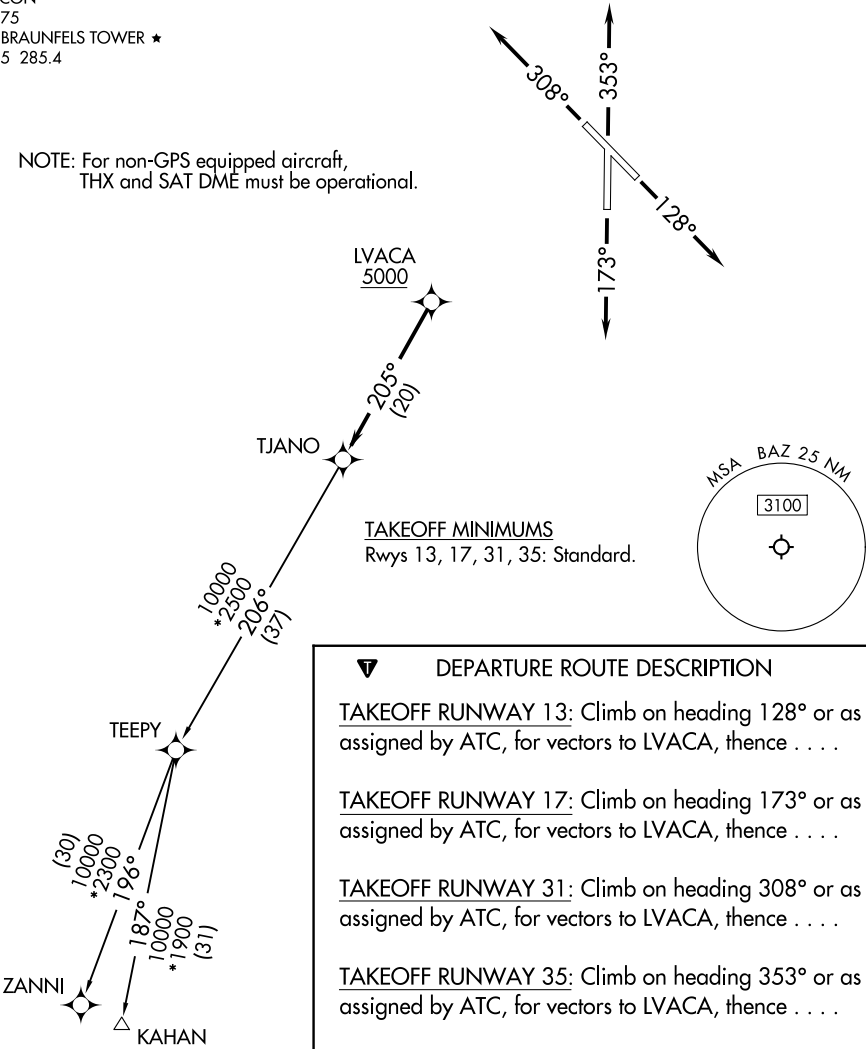


SAN ANTONIO DEP CON  
128.05 290.225  
ATIS  
119.325  
CLNC DEL  
134.75  
GND CON  
120.175  
NEW BRAUNFELS TOWER ★  
127.05 285.4

RNAV 1 - DME/DME IRU or GPS.  
RADAR required.

**TOP ALTITUDE:  
ASSIGNED BY ATC**

NOTE: For non-GPS equipped aircraft,  
THX and SAT DME must be operational.



**DEPARTURE ROUTE DESCRIPTION**

**TAKEOFF RUNWAY 13:** Climb on heading 128° or as assigned by ATC, for vectors to LVACA, thence . . .

**TAKEOFF RUNWAY 17:** Climb on heading 173° or as assigned by ATC, for vectors to LVACA, thence . . .

**TAKEOFF RUNWAY 31:** Climb on heading 308° or as assigned by ATC, for vectors to LVACA, thence . . .

**TAKEOFF RUNWAY 35:** Climb on heading 353° or as assigned by ATC, for vectors to LVACA, thence . . .

. . . on track 205° to TJANO, then on Transition.  
Maintain ATC assigned altitude.

KAHAN TRANSITION (TJANO1.KAHAN)  
ZANNI TRANSITION (TJANO1.ZANNI)

Note: Chart not to scale.