

WAAS CH 86435	APP CRS 308°	Rwy Idg TDZE Apt Elev	6503 646 658
W31A			

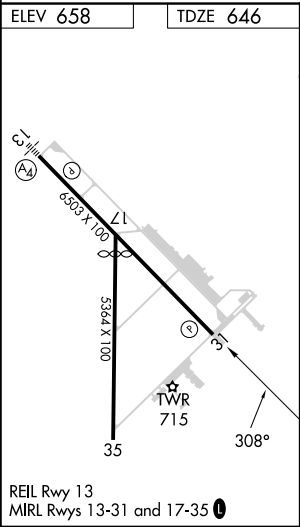
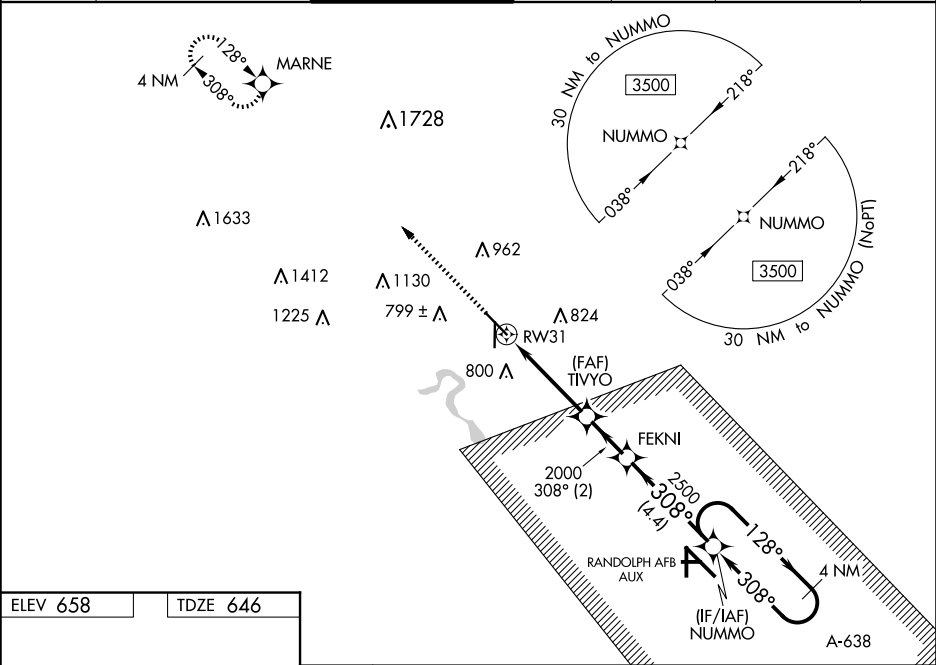
RNAV (GPS) RWY 31

NEW BRAUNFELS NTL (BAZ)

DME/DME RNP-0.3 NA. When local altimeter setting not received, use San Marcos altimeter setting and increase all DA 43 feet and all MDA 60 feet, and increase LPV all Cats, LNAV/VNAV all Cats, and Circling Cats C and D visibility $\frac{1}{4}$ mile, and LNAV Cats C and D visibility $\frac{1}{8}$ mile. For uncompensated Baro-VNAV systems, LNAV/VNAV NA below -5°C (23°F) or above 54°C (130°F). Baro-VNAV and VDP NA when using San Marcos altimeter setting. Helicopter visibility reduction below $\frac{3}{4}$ SM NA.

MISSED APPROACH:
Climb to 3100 direct MARNE and hold.

ATIS 119.325	SAN ANTONIO APP CON 124.45 335.625	NEW BRAUNFELS TOWER* 127.05 (CTAF) 285.4	GND CON 120.175	CLNC DEL 134.75	CLNC DEL 134.75 (When twr closed)	UNICOM 122.7
------------------------	--	--	---------------------------	---------------------------	--	------------------------



3100	MARNE	VGSI and RNAV glidepath not coincident (VGSI Angle 3.00/TCH 50).			
* LNAV only.		TWYO 2000	FEKNI	NUMMO	4 NM Holding Pattern
* 1.2 NM to RW31		2500	308°	128°	3500
1.2 NM		2.9 NM	2 NM	4.4 NM	GP 3.00° TCH 45
CATEGORY	A	B	C	D	
LPV DA	896- $\frac{3}{4}$		250 (300- $\frac{3}{4}$)		
LNAV/VNAV DA	1068-1 $\frac{3}{4}$		422 (500-1 $\frac{3}{4}$)		
LNAV MDA	1080-1	434 (500-1)	1080-1 $\frac{1}{4}$	434 (500-1 $\frac{1}{4}$)	
CIRCLING	1100-1 442 (500-1)	1240-1 582 (600-1)	1280-1 $\frac{3}{4}$ 622 (700-1 $\frac{3}{4}$)	1320-2 662 (700-2)	