

APP CRS
173°

Rwy Idg
TDZE
Apt Elev

4842
651
658

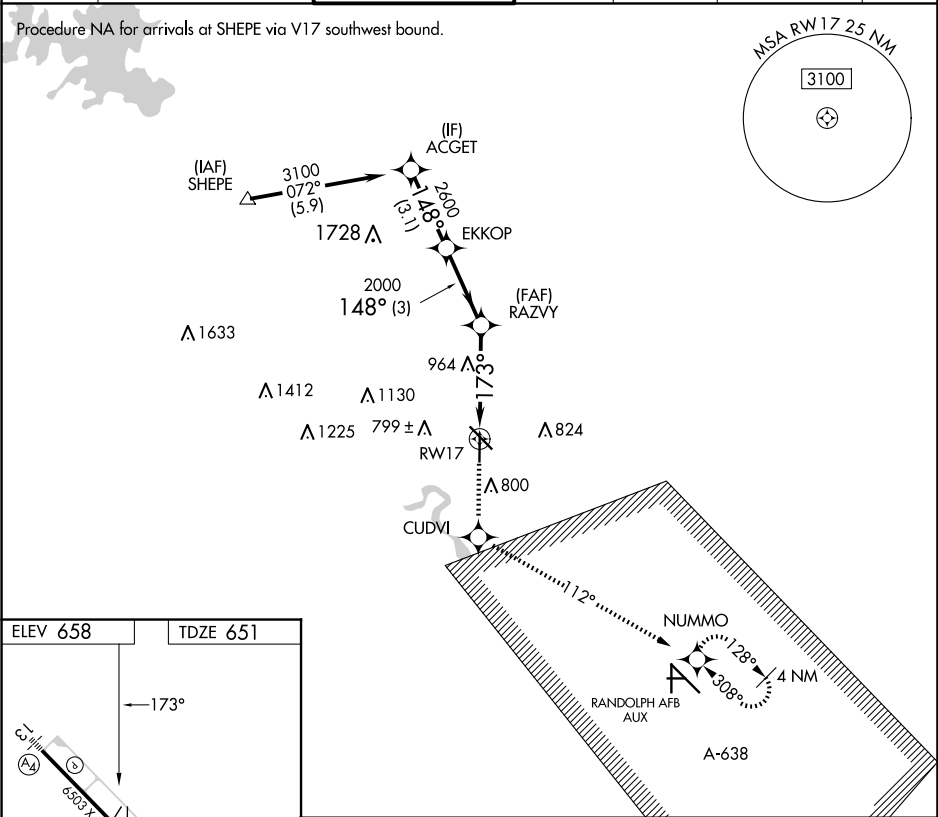
RNAV (GPS) RWY 17
NEW BRAUNFELS NTL (BAZ)

RNP APCH.

When local altimeter setting not received, use San Marcos Rgnl altimeter setting and increase all MDAs 60 feet and visibility Cat C ¼ SM. VDP NA when using San Marcos Rgnl altimeter setting.

MISSED APPROACH: Climb to 3500 direct CUDVI and via 112° track to NUMMO and hold, continue climb-in-hold to 3500.

ATIS 119.325	SAN ANTONIO APP CON 124.45 335.625	NEW BRAUNFELS TOWER* 127.05 (CTAF) 285.4	GND CON 120.175	CLNC DEL 134.75	CLNC DEL 134.75 (When twr closed)	UNICOM 122.7
-----------------	---------------------------------------	---	--------------------	--------------------	---	-----------------



ELEV 658

TDZE 651

3500

CUDVI

NUMMO

ir 112°

ACGET

EKKOP

RAZVY

2000

1.6 NM to RWY17

3.03°

TCH 45

173°

1.6 NM

2.5 NM

3 NM

3.1 NM

Procedure Turn NA

CATEGORY	A	B	C	D
LNAV MDA	1220-1	569 (600-1)	1220-1½ 569 (600-1½)	1220-1¾ 569 (600-1¾)