

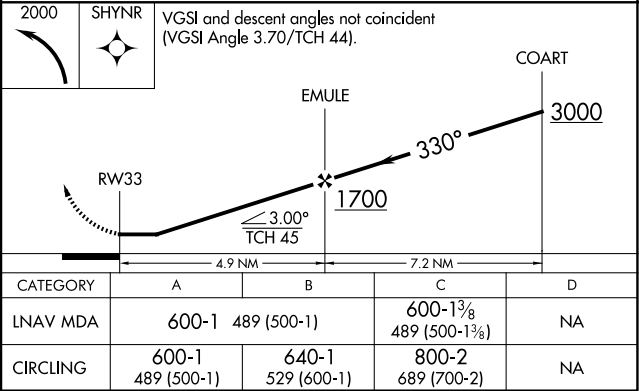
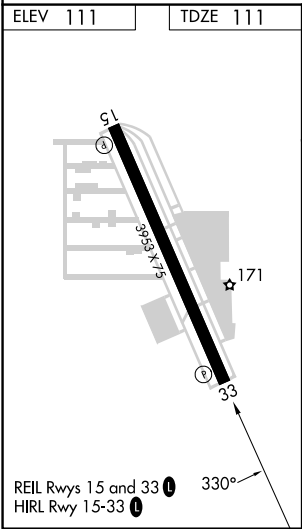
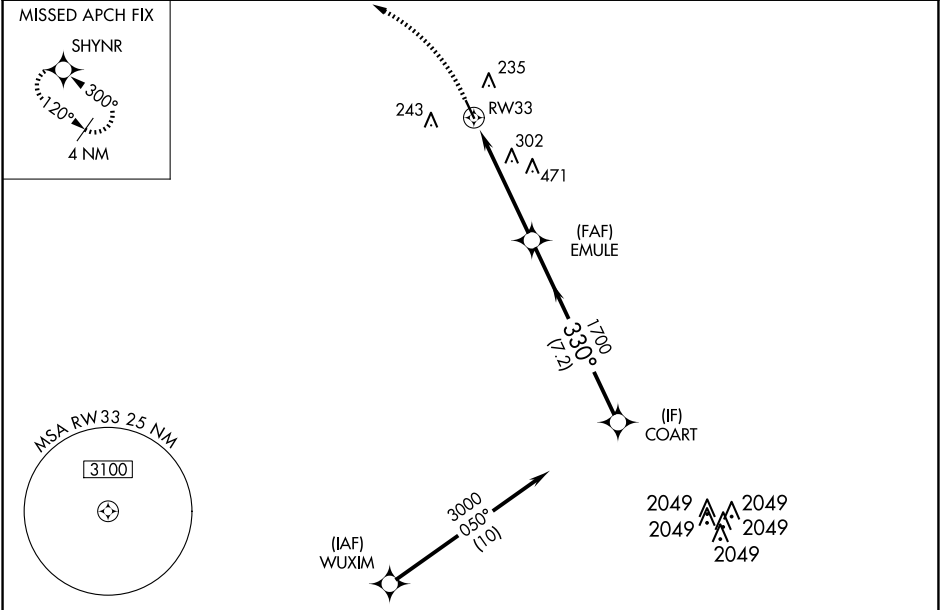
APP CRS	Rwy Idg	3953
330°	TDZE	111
	Apt Elev	111

RNAV (GPS) RWY 33

WEST HOUSTON (IWS)

RNP APCH.	MISSED APPROACH: Climbing left turn to 2000 direct SHYNR and hold.
<div><div>▼</div><div>NA</div></div> <div>Rwy 33 helicopter visibility reduction below 1 SM NA. Use George Bush Intcnl/Houston altimeter setting. Circling Rwy 15 NA at night.</div>	

HOUSTON APP CON 123.8 257.7	CLNC DEL 121.15	UNICOM 123.05 (CTAF) 0
--------------------------------	--------------------	---------------------------



SC-5, 10 JUL 2025 to 07 AUG 2025

SC-5, 10 JUL 2025 to 07 AUG 2025