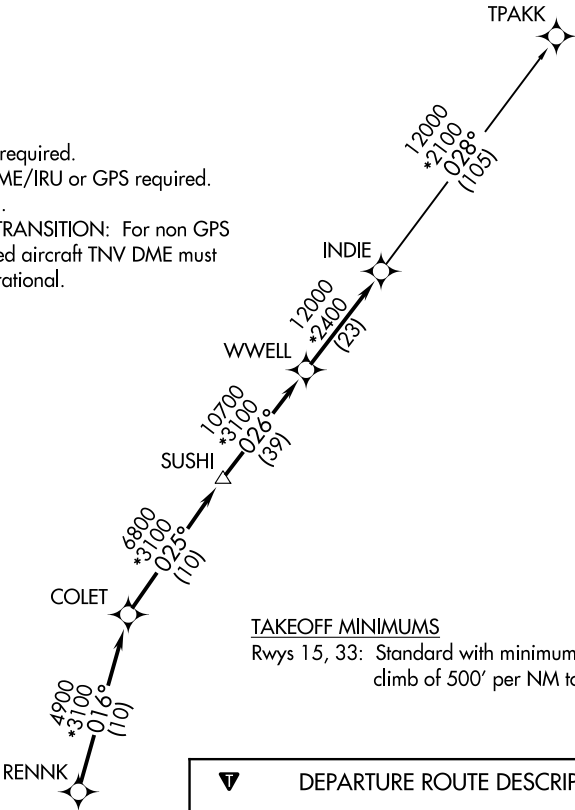


CLNC DEL
121.15
CTAF
123.05
HOUSTON DEP CON
123.8 257.7

TOP ALTITUDE:
ASSIGNED BY ATC

- NOTE: RADAR required.
NOTE: DME/DME/IRU or GPS required.
NOTE: RNAV 1.
NOTE: TPAKK TRANSITION: For non GPS
equipped aircraft TNV DME must
be operational.

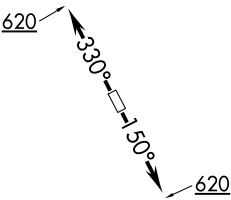


TAKEOFF MINIMUMS
Rwys 15, 33: Standard with minimum
climb of 500' per NM to 620.

DEPARTURE ROUTE DESCRIPTION

TAKEOFF RUNWAY 15: Climb on heading 150° to 620 for RADAR vectors to RENNK, then
TAKEOFF RUNWAY 33: Climb on heading 330° to 620 for RADAR vectors to RENNK, then
. . . . on track 016° to COLET, then on track 025° to SUSHI, then on track 026° to WWELL, then on track 026° to INDIE, then on (transition).
Maintain ATC assigned altitude. Expect filed altitude 10 minutes after departure.

TPAKK TRANSITION (INDIE8.TPAKK)



NOTE: Chart not to scale.

SC-5, 10 JUL 2025 to 07 AUG 2025

SC-5, 10 JUL 2025 to 07 AUG 2025